



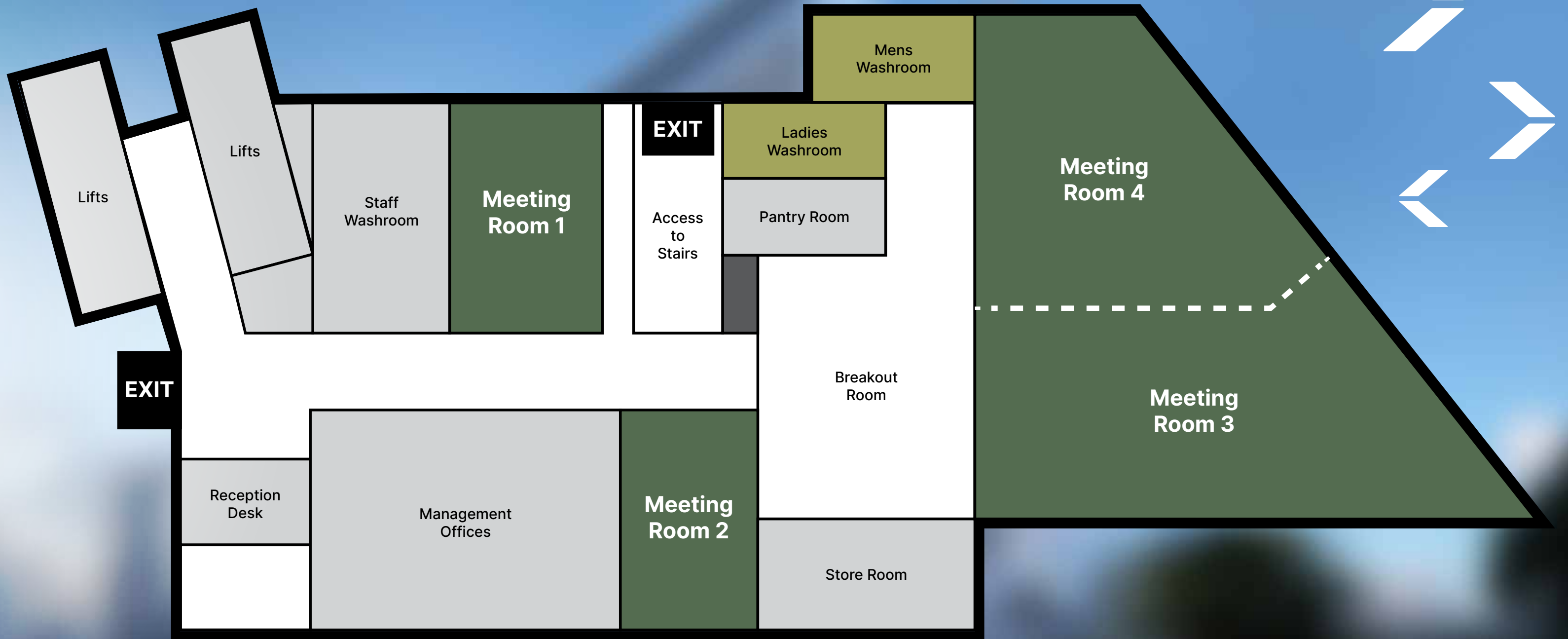
MEETINGS, CONFERENCE & EVENT SPACES



INTRODUCTION

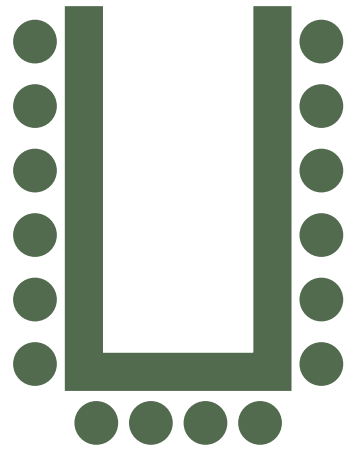
The First Collection Hotel Business Bay boasts an array of spaces and venues for meetings, trainings, workshops, luncheons, and team building.

With a dedicated team, to handle all pre- during- and post-event requirements, you and your team can be in safe hands and focus on what is important to you...

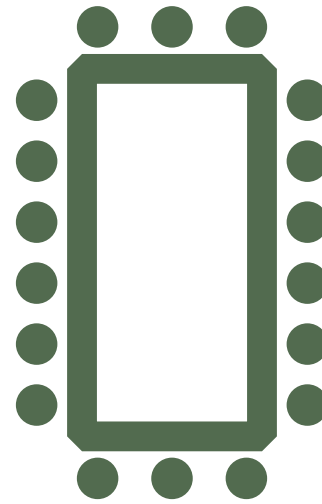


P FLOOR – PODIUM MAP

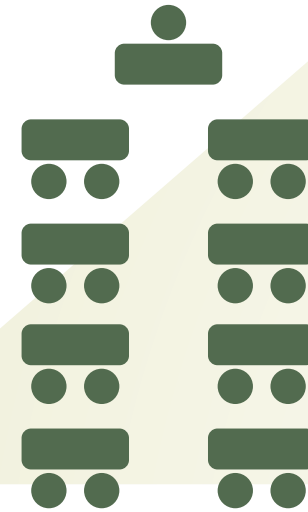
SETUP STYLES



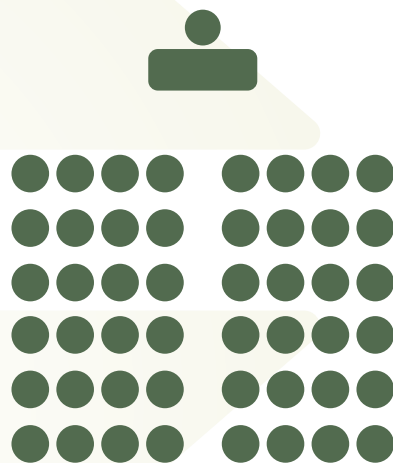
U Shape



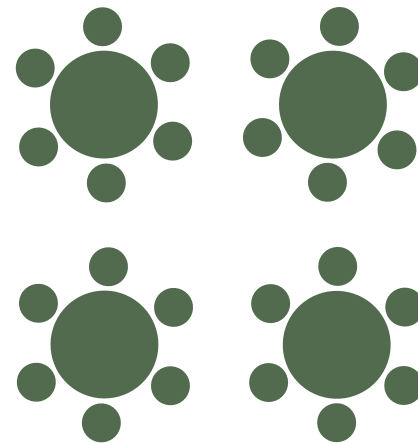
Boardroom



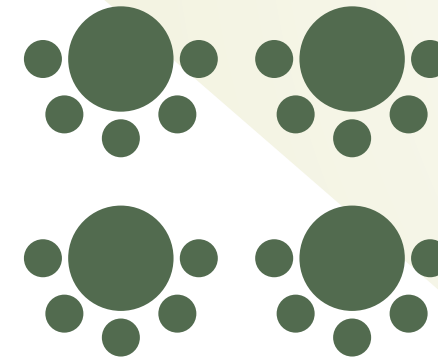
Classroom



Theatre

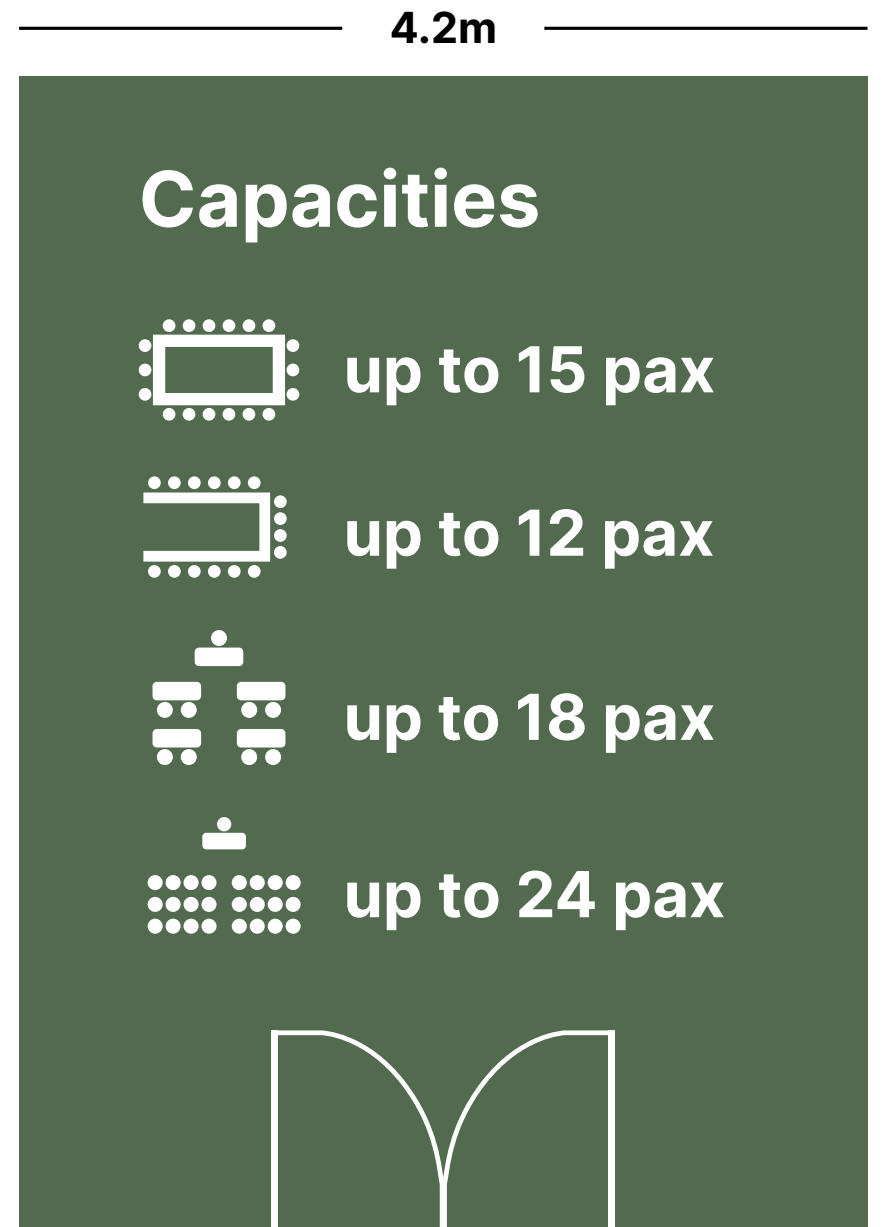
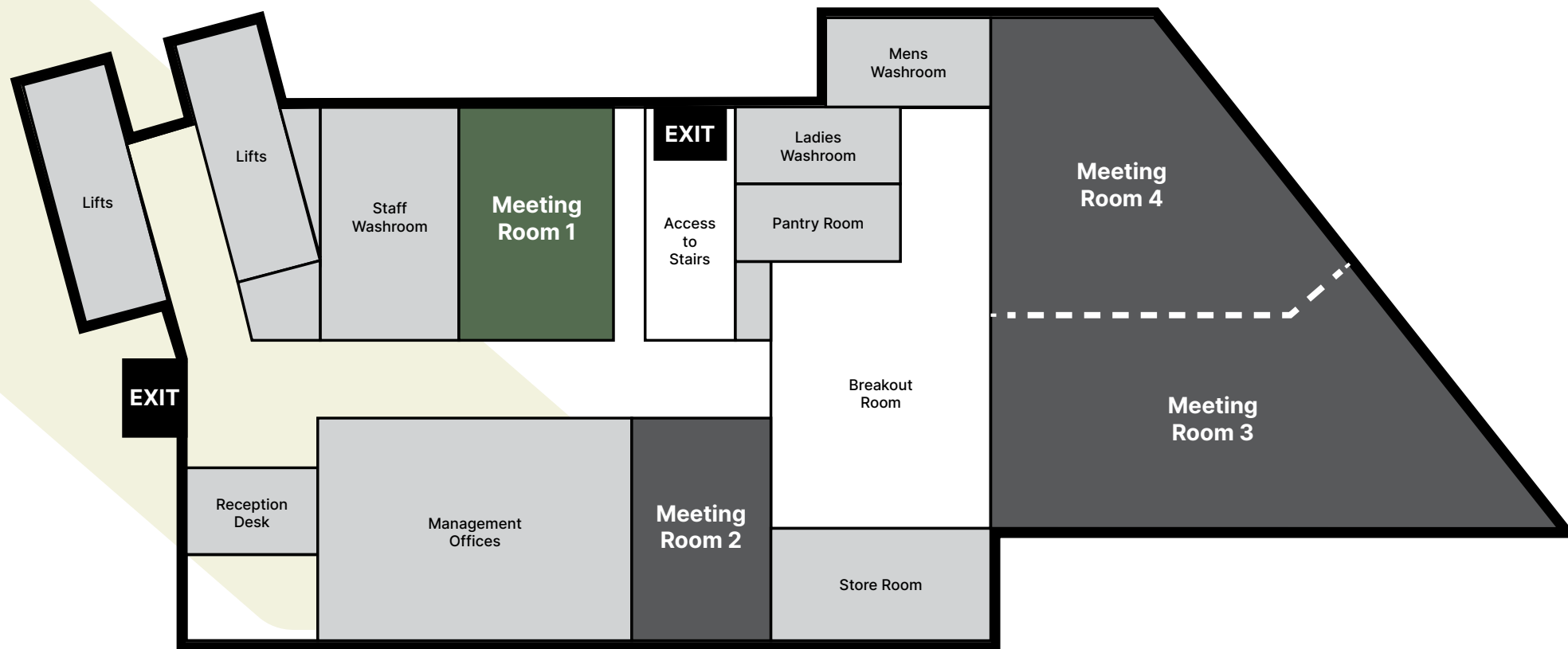


Banquet



Cabaret

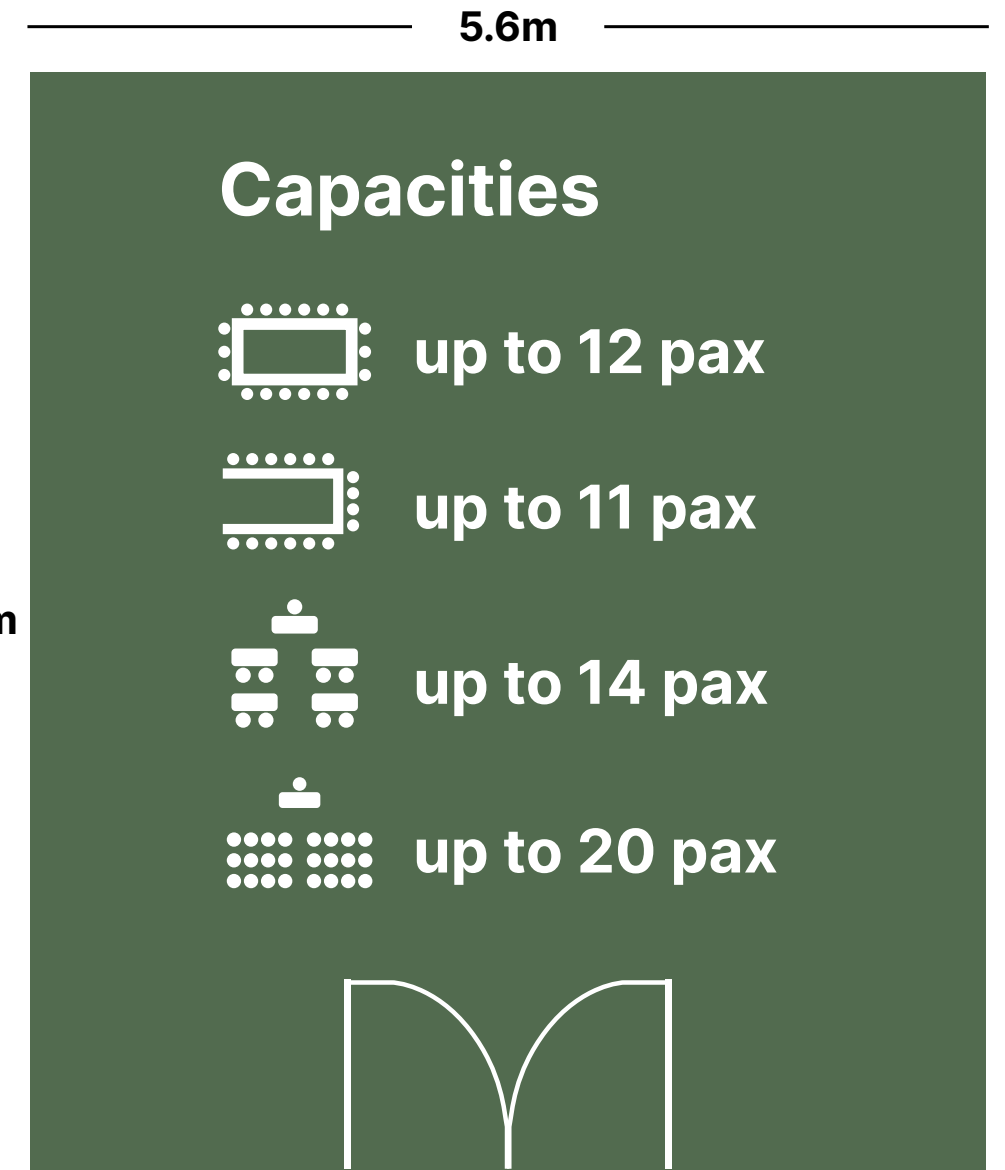
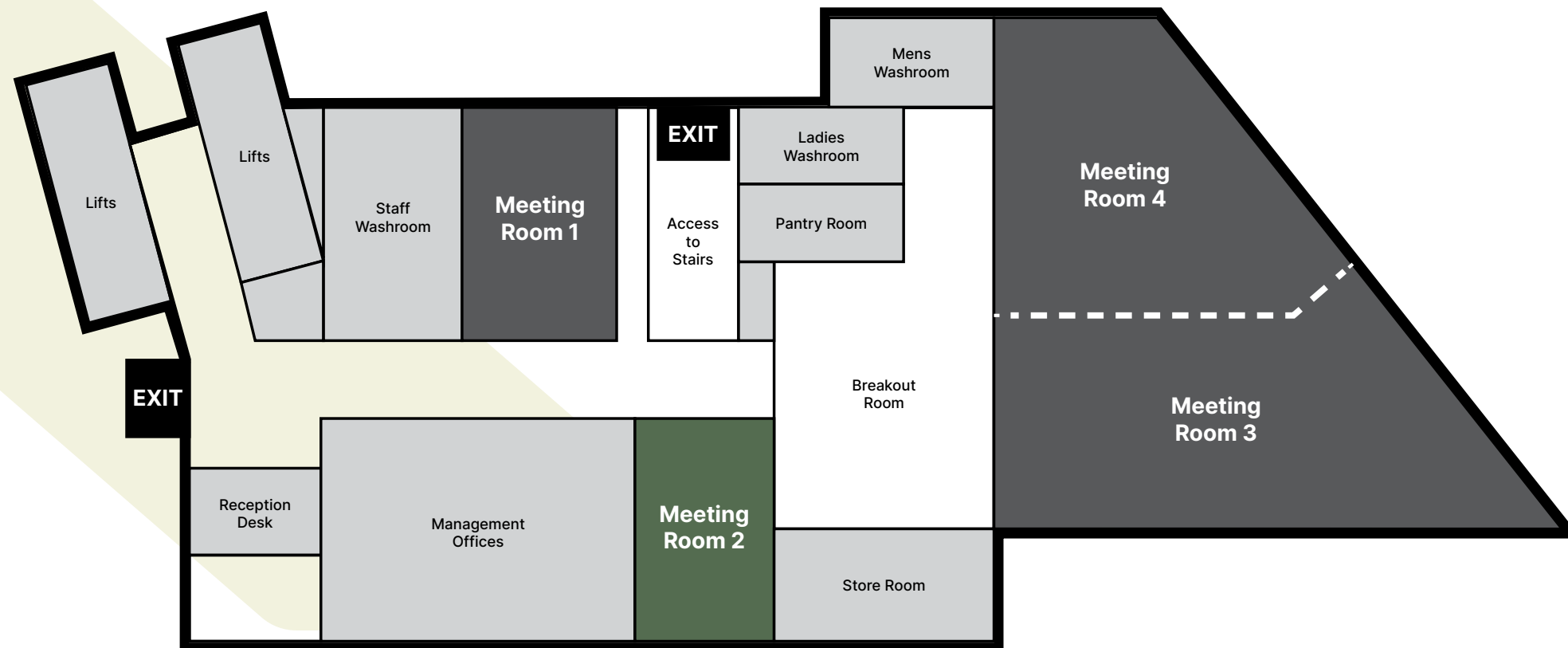
MEETING ROOM 1



Best for corporate meetings and training

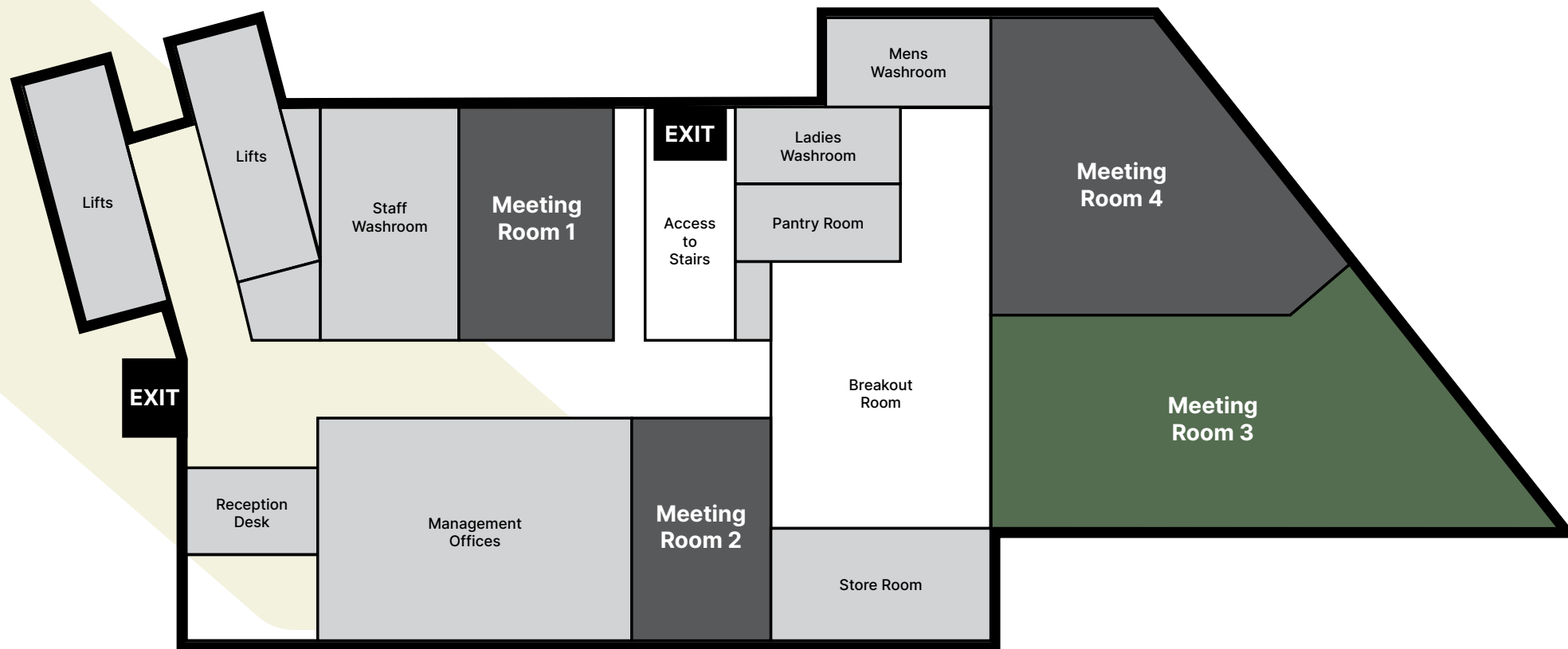
=28.36m²

MEETING ROOM 2

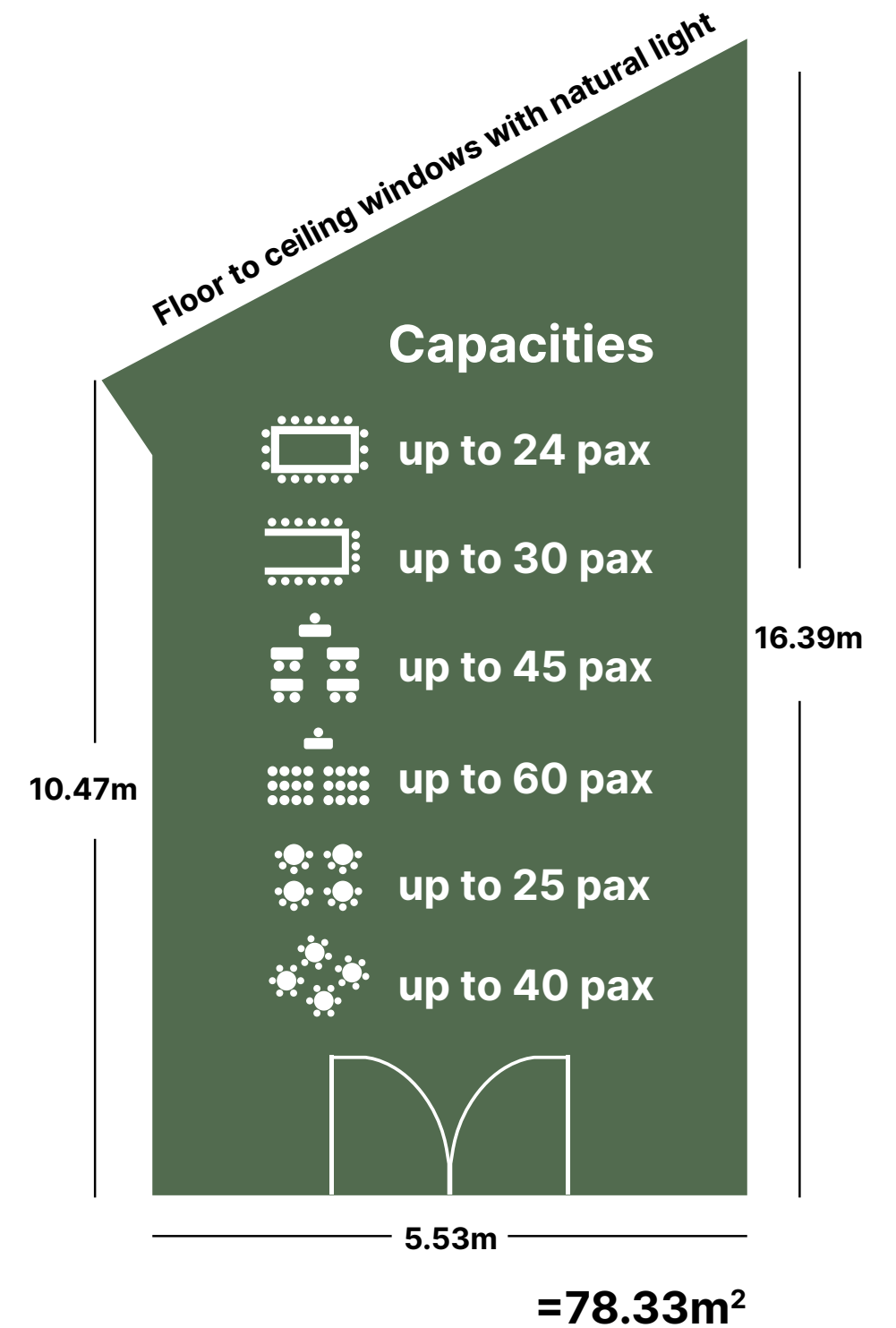


Best for corporate meetings and training

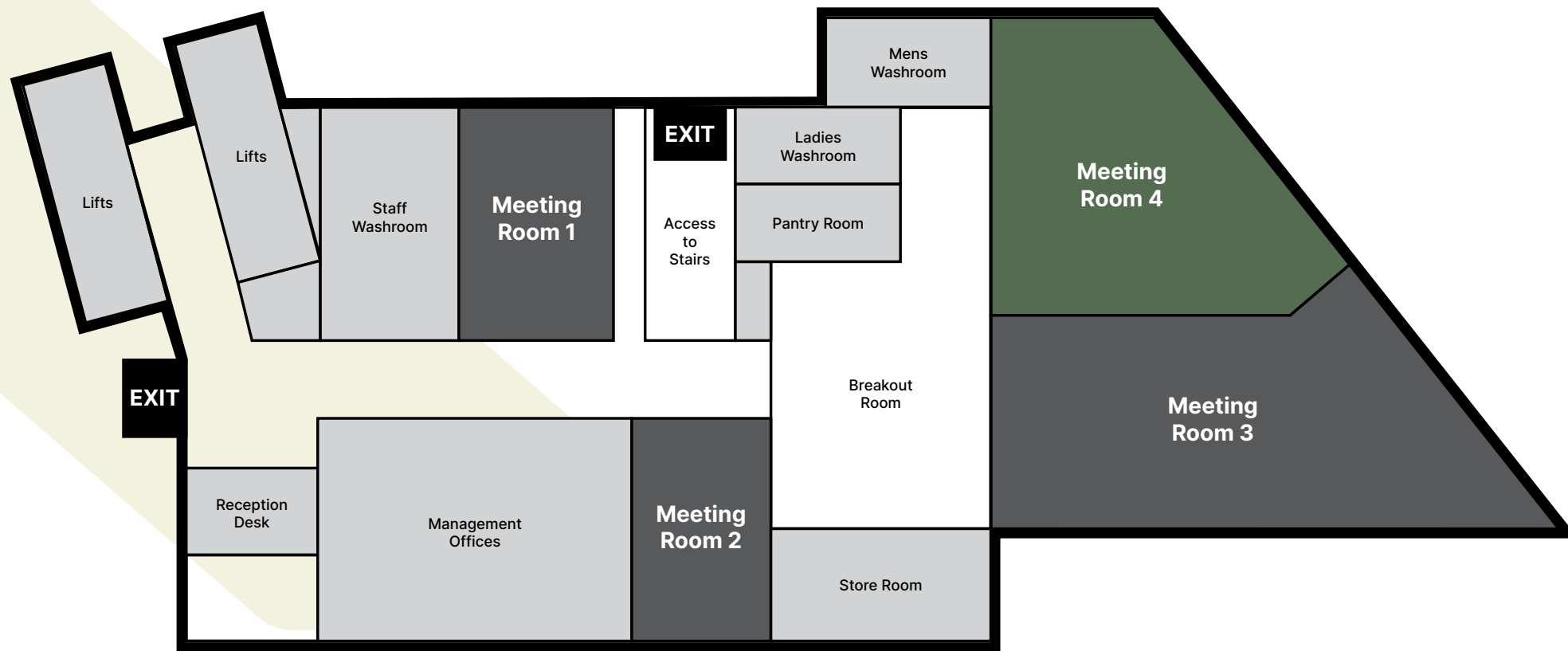
=34.93m²



MEETING ROOM 3

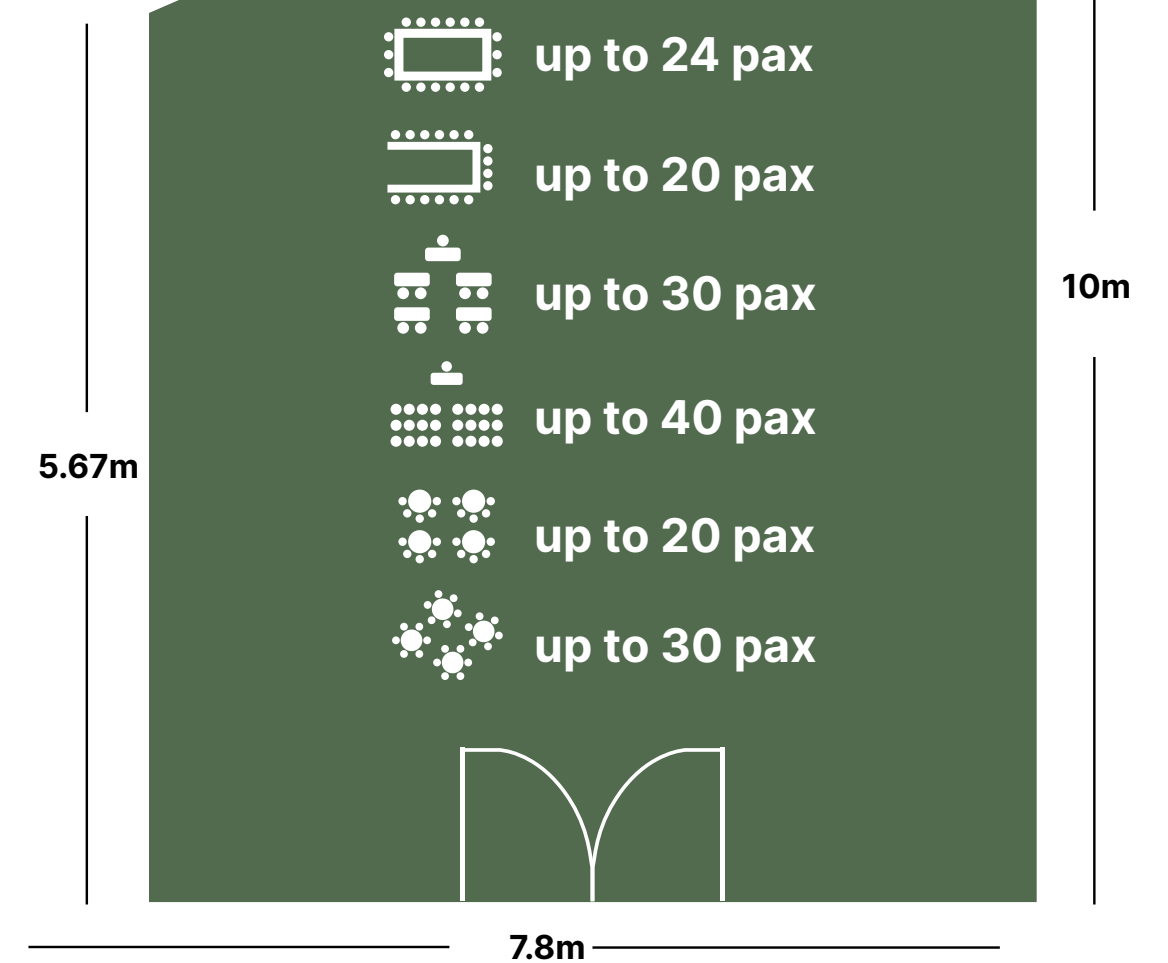


Best for corporate meetings, trainings, workshops and team buildings



MEETING ROOM 4

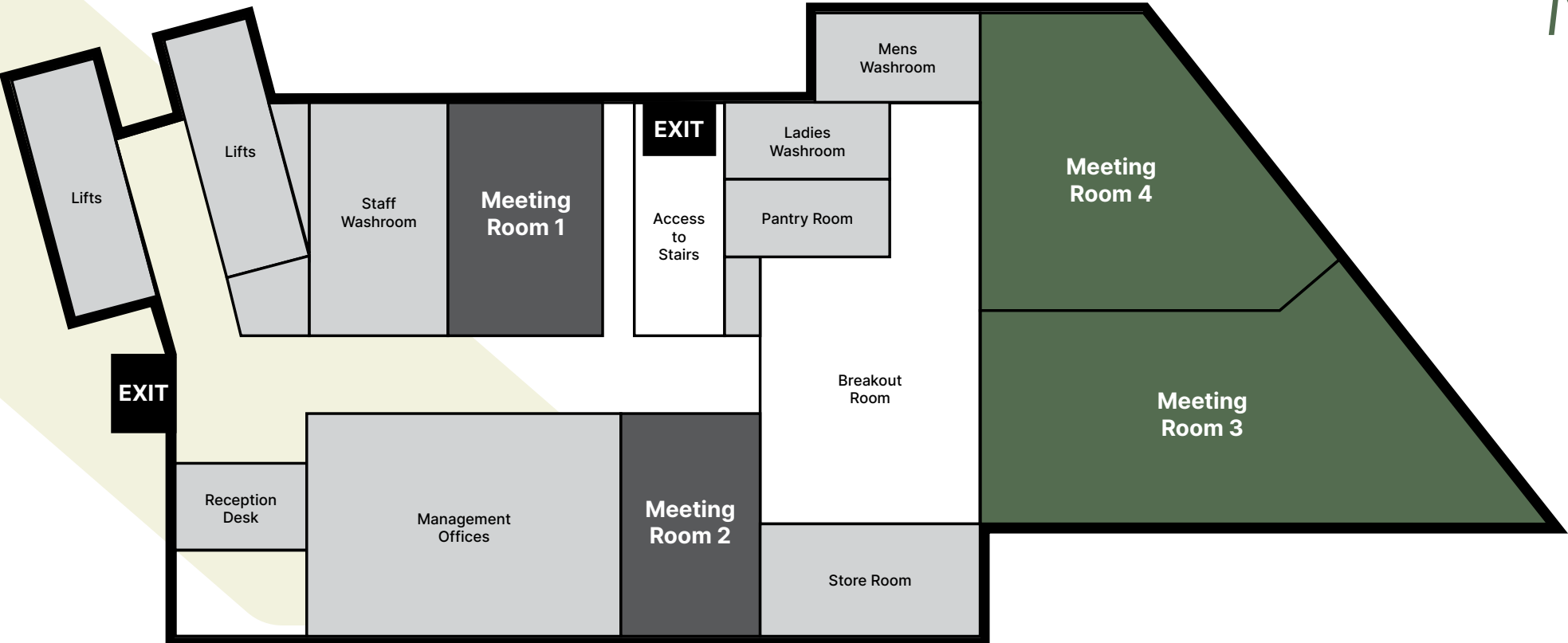
Floor to ceiling windows with natural light



=62.90m²

Best for corporate meetings, trainings, workshops and team buildings

MEETING ROOM 3&4



Floor to ceiling windows with natural light

Capacities

- up to 48 pax
- up to 50 pax
- up to 75 pax
- up to 100 pax
- up to 45 pax
- up to 70 pax

16.39m

13.4m

=141.23m²

Best for corporate meetings, trainings, workshops and team buildings

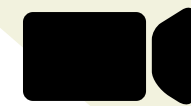
MEETING ROOM 1



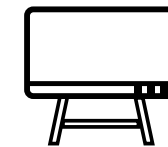
AV Facilities



Fast Wifi



**Camera with stand
for Video-conferencing**



**65" Huawei Ideahub
Interactive Screen**
(on stand, with wheels)



**Presentation
clicker**



**Connection to
TV screen**

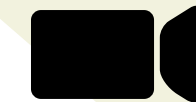
MEETING ROOM 2



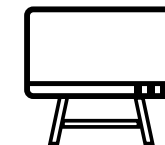
AV Facilities



Fast Wifi



**Camera with stand
for Video-conferencing**



**65" Huawei Ideahub
Interactive Screen**
(on stand, with wheels)



**Presentation
clicker**



**Connection to
TV screen**

MEETING ROOM 3



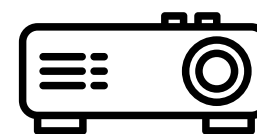
AV Facilities



Fast Wifi



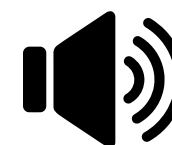
**Camera with stand
for Video-conferencing**



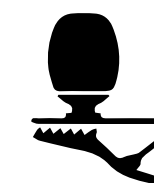
**Projector with
HDMI connection**



**Presentation
clicker**



**Built-in Audio
speakers**



**Microphone
(hand-held and lapel)**

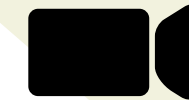
MEETING ROOM 4



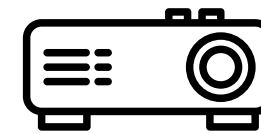
AV Facilities



Fast Wifi



**Camera with stand
for Video-conferencing**



**Projector with
HDMI connection**



**Presentation
clicker**



**Built-in Audio
speakers**



**Microphone
(hand-held and lapel)**

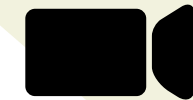
MEETING ROOM 3 & 4



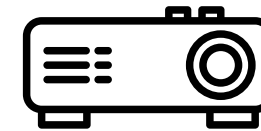
AV Facilities



Fast Wifi



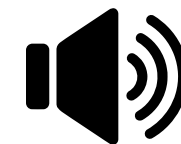
**Camera with stand
for Video-conferencing**



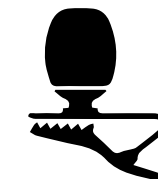
**Projector with
HDMI connection**



**Presentation
clicker**

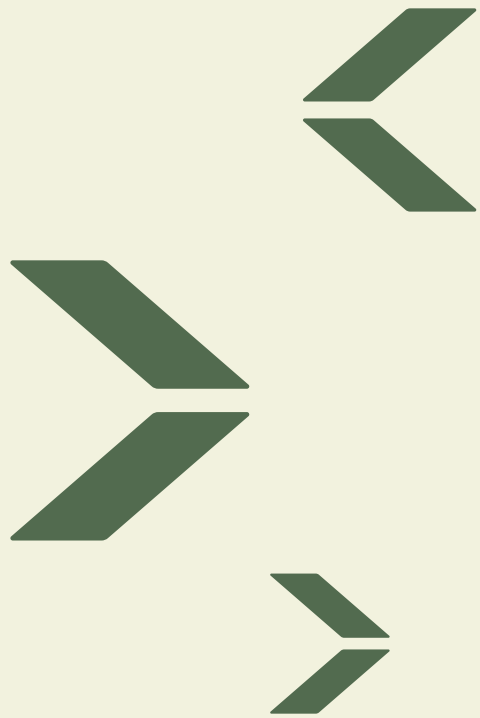
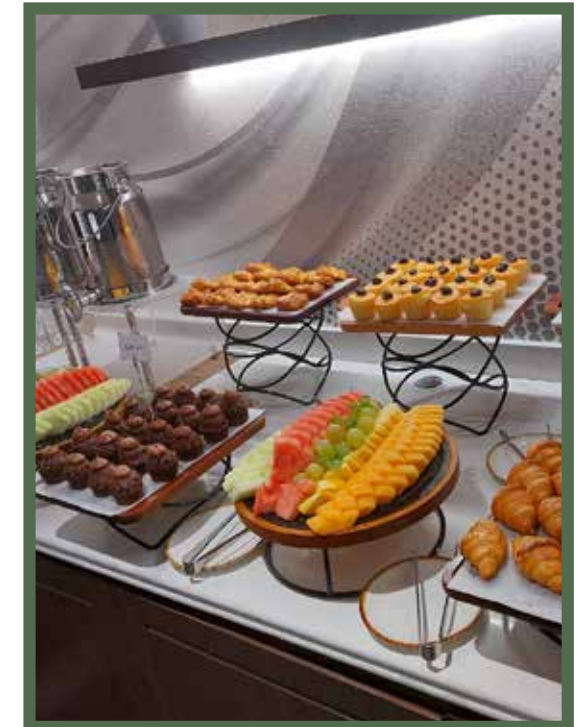


**Built-in Audio
speakers**



**Microphone
(hand-held and lapel)**

REFRESHMENTS



SUMMARY

ROOM	Size	Maximum Capacity	Theatre	Classroom	Boardroom	U-Shape	Banquet	Cabaret
ROOM 1	34.93 sqm	24	24	18	15	12	N/A	N/A
ROOM 2	28.36 sqm	20	20	14	12	11	N/A	N/A
ROOM 3	78.33 sqm	60	60	45	24	30	40	25
ROOM 4	62.90 sqm	40	40	30	24	20	30	20
ROOM 3&4	141.23 sqm	100	100	75	48	50	70	45

