

THE RESPONSIVE
WAY OF WORKING

NH Collection Prague Carlo IV



NH COLLECTION
PRAGUE CARLO IV



History

NH Collection Prague Carlo IV was originally a Czech Mortgage Bank built in 1890 by famous Viennese architect Achille Wolf. It is a Neo-Renaissance building listed as a National Heritage property. With the arrival of the communist regime, it became the Prague Post Office Headquarters which marked the darkest chapter in the history of this palace. The Post Office was in fact the 'black cabinet': the seat of postal censorship.

The hotel's Neo-Renaissance façade recalls the architecture of the National Theatre and the National Museum. It is decorated with metal reliefs that represent the evolution of coinage in the Czech Kingdom. The sculptures represent Work, Land, Capital and Profit. The gable of the tri-partite window is crowned with a heraldic lion, the symbol of the Kingdom of Bohemia.

The task of modifying this historical palace into a five-star hotel was given to Italian architects Maurizio Papiri and Adam D. Tihany. Meanwhile, the Czech architectural studio DAM extended the property with an entirely new wing. The renovation was completed in 2003. The magnificent lobby still bears the signs of its history.

In 2022, NH Collection Prague Carlo IV went through an extensive design refresh. The hotel lobby, restaurant, and bar new look respects its rich history while considering the needs of today's travellers, turning it into a vibrant meeting point for guests and locals alike. The guest rooms in the historical wing also received a design update while still keeping their old-time attributes such as high ceilings, soft wooden floors and marble bathrooms. The tastefully appointed rooms in the modern wing exude casual elegance and the bathroom redesign uplifts the guest room experience.



Location

The hotel is located in the centre of Prague, on the border of the Old and New Town. Town, only a ten-minute walk from the beating heart of Prague, Old Town Square, and the modern Wenceslas Square. Narrow streets that meander through towers and pinnacles help create the unique atmosphere of this legendary city. NH Collection Prague Carlo IV is just five minutes away from the Prague State Opera and within easy reach of major tourist attractions, including Municipal House, Powder Tower and high-end shopping on Pařížská street. Equally close to the hotel are the iconic Charles Bridge and the Jewish Quarter with the oldest European Jewish Cemetery and Synagogue. The Prague Castle, the largest castle complex in the world is reachable in around 40 minutes on foot, or easily accessible by public transport from the hotel.

ADDRESS

NH Collection Prague Carlo IV
Senovážné náměstí 13/991
Prague, Czech Republic

[Map view](#)

DISTANCE

Prague Central Station
0.3 km

[Map view](#)

Wenceslas Square
0.8 km

[Map view](#)

Prague Congress Center
3.5 km

[Map view](#)

Airport Václav Havel Ruzyně (PRG)
17 km

[Map view](#)

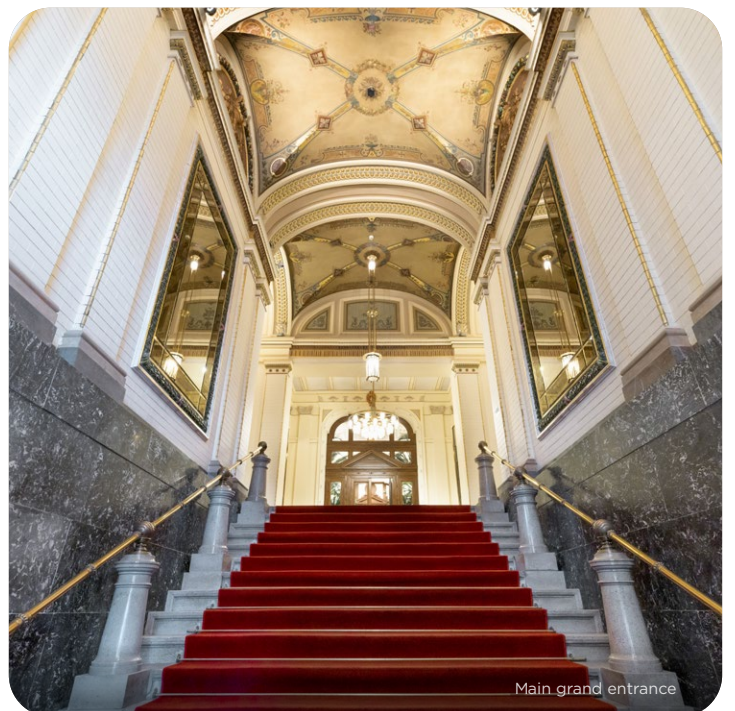
CONTACT FOR GROUP BOOKINGS

groups.nhcollectionpraguecarloIV@nh-hotels.com
+420 228 880 714

[nh-collection.com](https://www.nh-collection.com)

The Lobby

The lobby is the former terminal hall of the bank that has been restored and brought back to its original splendour. It is the most iconic area in the building. In the colossal hall, with its four dominant black alabaster ionic pillars, soft light emphasises the 19th century's decoration. The ceiling is adorned with wonderfully delicate, well-preserved frescoes and crystal chandeliers. This space combines a distinctive ambience with comfortable seating during the day and a lively atmosphere at night with the newly added 1890 Bar.



Rooms with a soul

NH Collection Prague Carlo IV has 152 rooms and suites, all of which combine contemporary design with the classical elegance of the 19th century. All rooms and suites are individually designed and furnished by the famous Rome-based designer Maurizio Papiri and overlook either an internal courtyard or the charming Senovážné Square.

Rooms in the historical wing of the building feature high ceilings and 19th-century décor. The walls of the rooms and suites are decorated with original art. There are king, queen size and twin beds available. En-suite bathrooms are classical in style and showcase an abundance of marble detailing.

The Presidential and Carlo IV Suites house original frescoes which have been brought back to their former splendour by skilled restorers.

Superior Rooms	24	Junior Suites	3
Deluxe Rooms	72	Suites	8
Premium Rooms	18	Family Suites	2
Premium Triple Rooms	3	Presidential Suite	1
Premium XL Rooms	20	Carlo IV Suite	1











Inspiring meetings and events

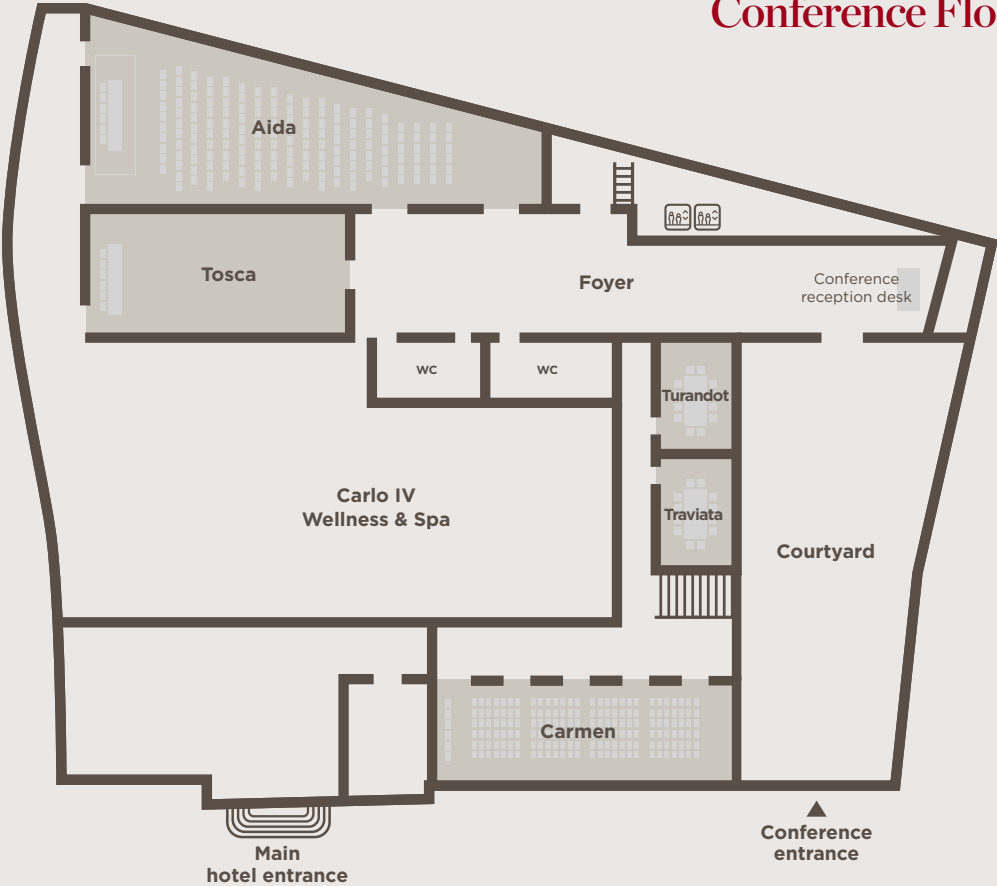
NH Collection Prague Carlo IV offers excellent facilities for conferences, business meetings, corporate and social events. It is a pleasure to do business at the hotel, where six flexible, high-tech meeting rooms can be set up for anything from a creative session for 16 people, to a board meeting, a product launch or a full-scale conference for 220 guests. The stylish, contemporary conference floor has a separate, dedicated entrance and offers five versatile rooms of various sizes that can cater for both big and small events. Each room is dedicated to an opera – Aida meeting room, Tosca, Turandot, Traviata and Carmen. In addition, a grand and spacious Opera Ballroom is located on the lobby level.

There is an outdoor courtyard and spacious foyer with a registration area which encourages guests to relax during business meetings. Modern in design, this light-drenched foyer is entirely covered with glass and its walls are decorated with tree motifs.

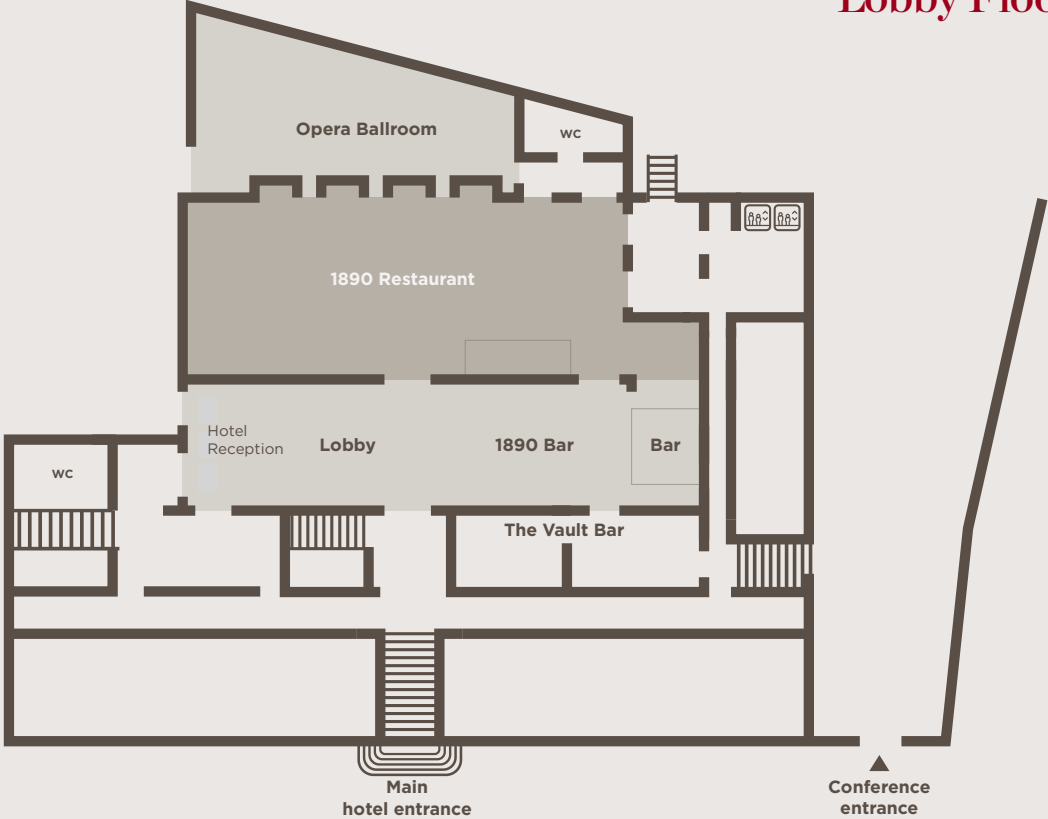
The Opera Ballroom is an impressive, spacious venue suitable for high-end events, fashion shows, concerts, gala dinners, weddings, and other VIP social gatherings, seating up to 150 people. Luxuriously designed with wooden floors, black paneling and large mirrors, it was designed by the same interiors team that creates Ferrari's showrooms around the globe. The most prominent feature of the Opera Ballroom is the intricate lighting, with large fabric lamps that resemble giant, tulle skirts. This contemporary and statement light fitting can glow a variety of colours to coordinate with any occasion or set up. Larger-scale events can use the adjoining bar area as well as the beautiful neo-renaissance lobby. All facilities are fitted with the latest audiovisual equipment and the events spaces can cater for anything from business lunches to group gala dinners.

MEETING ROOM NAME	DIMENSIONS m ft	AREA m ² ft ²	HEIGHT m ft	 Banquet	 Boardroom	 Classroom	 Cocktail	 U-Shape	 Theatre	DAYLIGHT
Aida	13.1 x 31 x 5.95 43 x 101 x 20	293 3154	3.7 12	144	60	134	330	60	220	.
Carmen	20.6 x 6.38 68 x 21	131.5 1416	3.26 11	64	50	60	120	44	90	Yes
Opera	13.5 x 22.9 x 7.54 44 x 75 x 25	233 2508	6.5 21	150	54	120	200	50	200	.
Tosca	17.7 x 6.7 58 x 22	118.6 1277	4.4 15	64	50	54	120	40	104	.
Turandot	7.18 x 4.86 23 x 16	35 377	3.17 10	.	10	.	.	10	.	Yes
Traviata	7.5 x 4.86 24 x 16	36.5 393	3.24 11	.	10	.	.	10	.	Yes
Foyer	18.49 x 7.25 60 x 24 + 59 x 19	134 + 103 1442 + 1109	4.4 15	56	44	50	200	40	100	Yes
Courtyard	18 x 5.72 60 x 24 + 59 x 19	349 3757	250	.	180	Yes
The Vault	8 x 5 + 6.2 x 2.7 26 x 16 + 20 x 9	40 + 17.74 430 + 191	4.4 15	10	.	.	25	.	.	.

Conference Floor



Lobby Floor



Gastronomy

There is a great variety of dining options at NH Collection Prague Carlo IV.

From plentiful breakfast buffet featuring healthy options and freshly prepared meals to great all-day dining and evening cocktails, there is a choice for everyone.



1890 Restaurant

The open-space restaurant offers all-day dining and has a variety of seating options with intimate corners. The best of local and internationally inspired cuisine is served here throughout the day. The restaurant also features promotional menus for different seasons of the year.



1890 Bar

The unique bar in the historical lobby is a sophisticated space where guests can unwind with their favourite drink and on some nights listen to live music production.



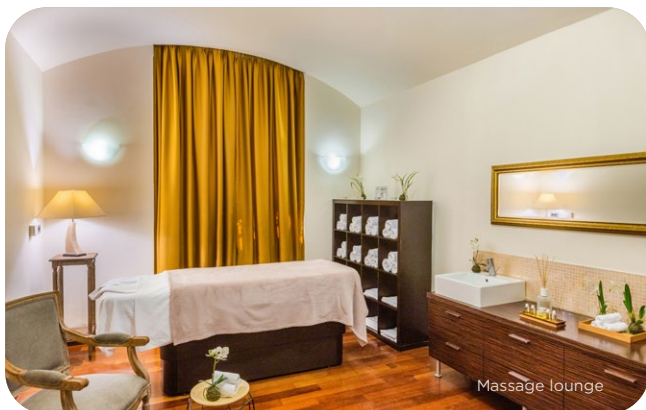
The Vault

The Vault - a premium spirits bar - offers a highly intimate atmosphere thanks to the origin of its location. This is the former bank's treasury - the oldest one in Central Europe - which dates back to 1910.



Leisure facilities

There is an ample choice to wind down at NH Collection Prague Carlo IV, where leisure facilities make relaxation a pleasure. Carlo IV Wellness & Spa, featured in the best Prague spa list, offers the perfect combination of services for spiritual and physical relaxation, regeneration and renewal. Feel pampered at the 20m (66ft) heated swimming pool with two whirlpools and massage beds. Then head into the relaxation area that includes dry sauna, steam room and lounge beds around the pool. Extremely skilled staff provide personalised treatments including full body and facial treatments. A modern fitness studio with a cardio and weight-lifting is also available for your daily workouts.



Services

- Parking garage (at a fee)
- Guest relations & ticketing service
- Transportation services
- Dedicated on-site event planner
- Special programmes for groups
- Healthy food options

nh | HOTEL GROUP
PART OF **MINOR**
HOTELS

nh-collection.com