

freiraum



25h
zurich/langstrasse
twenty five hours hotel



25h
zurich/west
twenty five hours hotel

inhalt

- 3 overview**
- 5 langstrasse packages**
- 7 extras langstrasse**
- 8 langstrasse function rooms**
- 15 langstrasse rooms**
- 18 zurich west packages**
- 20 extras zürich west**
- 21 zürich west function rooms**
- 29 zürich west rooms**
- 32 event ideas**
- 34 directions**
- 36 contact**

a lalalala long.

overview

- 170 rooms
- free high-speed wifi
- neni zürich
- cinchona bar
- 3 function rooms

public areas

- neni zürich
- cinchona bar
- gambling- & businesscorner



home of the brave.

3

overview

- 126 rooms
- free high-speed wifi
- ribelli restaurant
- 3 function rooms
- large covered outdoor area
& parking garage for product
presentations

public areas

- neni zürich west
- businesscorner



a lalalala
long.



25h

zurich/langstrasse
twenty five hours hotel

conference packages

langstrasse

basic package

incl. in each package

- _ room rental
- _ writing materials
- _ mineral water
- _ projector
- _ projector screen (tv in the audiotape lounge)
- _ flip chart
- _ moderator's toolkit
- _ high speed wifi

incl. in each package

half-day package*

until 12pm or 1-5pm

morning or afternoon coffee break

- _ nespresso coffee, samova tea, baked goods, fruit basket, fruit juice

lunch

- _ 3-course lunch, based on the head chef's choice includes water

chf 98 per person per day, excl. drinks package

full-day package*

until 5pm

morning coffee break

- _ nespresso coffee, samova tea, baked goods, fruit basket, fruit juice

lunch

- _ 3-course lunch, based on the head chef's choice includes mineral water

afternoon coffee break

- _ nespresso coffee, samova tea, baked goods, fruit basket, fruit juice

chf 125 per person per day, excl. drinks package

* the full-day package can be booked in the freiraum function room for groups of 15 people or more. the full-day package can be booked in the studio and audiotape lounge for groups of 8 people or more.

drinks packages

langstrasse

6

2 hours*

- _ prosecco
- _ house red and white wine
- _ still and sparkling mineral water
- _ soft drinks
- _ orange juice
- _ beer
- _ coffee, espresso, tea

chf 35 per person
each additional hour costs chf 15 per person

4 hours*

- _ prosecco
- _ house red and white wine
- _ still and sparkling mineral water
- _ soft drinks
- _ orange juice
- _ beer
- _ coffee, espresso, tea

chf 55 per person
each additional hour costs chf 15 per person

soft drinks

- _ soft drink buffet in the room

full-day chf 12 per person
half-day chf 8 per person

* the drinks package is not bookable in the cinchona bar.

extras

langstrasse

7

refreshments plus

the following are available as add-ons to the conference packages:

coffee & croissants before the meeting	ice cream after the lunch break	home-made limonana or neni ice tea	freshly squeezed orange juice for the coffee break	coffee all day – not just during coffee breaks
chf 8 per person	chf 3 per person	chf 11 per litres	chf 19 per litres	chf 6 per person

equipment

tech equipment available upon request, pricing per item

moderator's toolkit	chf 25 [one moderator's toolkit is included in the basic package]	conference phone	chf 150
flip chart/pin board	chf 30 [one flip chart is included in the basic package]	handheld microphone	chf 30
headset	upon request	tv with a hdmi connection	chf 150
pointer	chf 30		

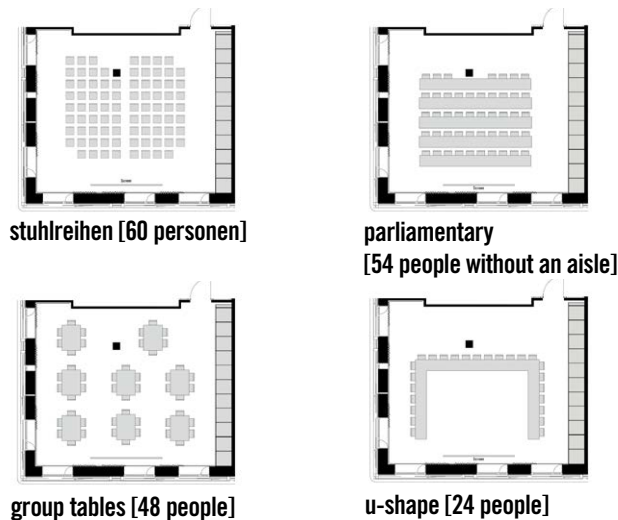
freiraum



overview

The Freiraum function room at the 25hours Hotel Langstrasse in Zurich catches the eye with its bright, inviting interior and warm colours. Modern conference technology, plenty of daylight and fresh air bring life to creative get-togethers. Instruments on the walls are reminiscent of the last band practice. This can potentially turn dull budget meetings into impromptu jam sessions very quickly.

facts



stuhltreihen [60 personen]

parliamentary
[54 people without an aisle]

group tables [48 people]

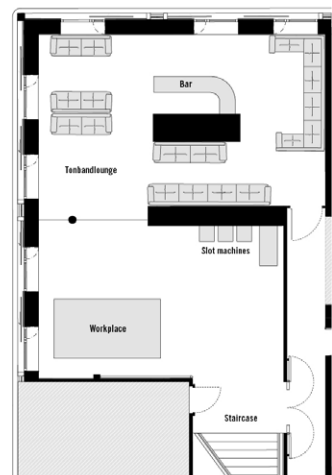
u-shape [24 people]

size	room capacity [max. capacity]	equipment	minimum number of attendees*
— 99qm — 8.5 x 9.9 x 2.4m [l x b x h]	— seating rows [60 people] — parliamentary [47 people with an aisle] [54 people without an aisle] — group tables [48 people] — u-shape [24 people]	— projector — projector screen — bose sound system — flip chart/pin board — daylight — moderator's toolkit	— none

room rental**
from chf 1600 for a full day
from chf 990 for a half day

* the full-day package can be booked for groups of 15 people or more ** minimum spend chf 2500

tonbandlounge



tonbandlounge

overview

The tonbandlounge is the perfect setting for creative meetings and drinks with its comfortable lounge set-up, private bar and cassette and audiotape equipment. Analogue worlds pervade the tonbandlounge – specifically designed by the Viennese old-school specialists at SUPERSENSE. The tonbandlounge is situated in a quiet spot on the 1st floor and can be closed off using a glass door. The Club Lounge is situated in front of the tonbandlounge and has a business station equipped with an iMac and printer. Next door, you can find our Gambling Corner with analogue devices such as Polaroid pinball and a slot machine.

facts

size	room capacity [max. capacity]	equipment	minimum number of attendees*
– 69qm	– lounge [20 people]	– lounge	– none
– 10,9 / 6,5 / 2,5m (l x b x h)	– get-together [45 people]	– tall tables – bose sound system – flip chart – daylight – moderator's toolkit – tv	

room rental from chf 600 for a full day
 from chf 400 for a half day

* the full-day package can be booked for groups of 8 people or more.

atelier



overview

The atelier is right next to the Cinchona Bar. As the name may suggest, it is the artistic heart of the hotel. We support young artists with our Artist in Residence project, which offers artists bed and board in exchange for their work in the atelier, turning it into a truly creative space thanks to their participation in events such as artist talks, performances or presentations. The atelier is the perfect size for smaller meetings and get-togethers, as well as product presentations. The creative space is equipped with a workbench and a table which is a hand-built surfboard.

facts

size	room capacity [max. capacity]	equipment	minimum number of attendees*
<ul style="list-style-type: none">— 36qm— 10,4 x 3,4 x 3,2m [l x b x h]	<ul style="list-style-type: none">— table [14 people]— theatre [20 people]	<ul style="list-style-type: none">— projector— projector screen— bose sound system— daylight	<ul style="list-style-type: none">— none

room rental from chf 600 for a full day
from chf 400 for a half day

* the full-day package can be booked for groups of 8 people or more.

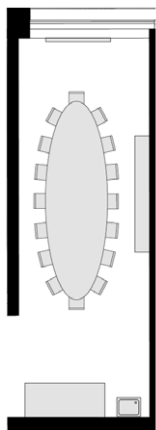
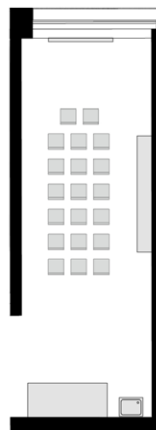


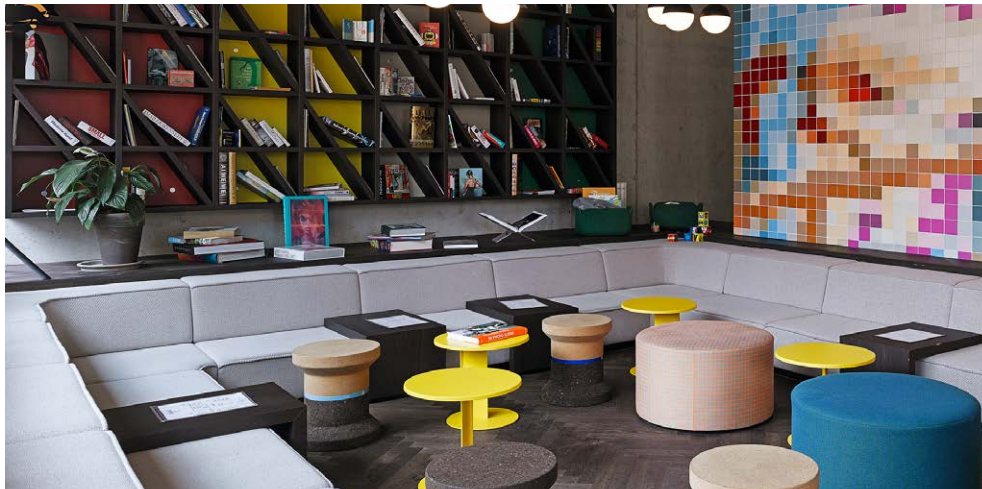
table [14 people]



theatre [20 people]

wohzimmer lounge

11

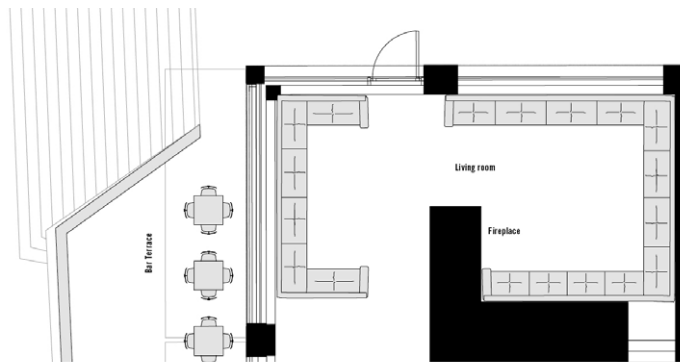


overview

Flooded with light, the Wohnzimmer lounge on the ground floor at the 25hours Hotel Langstrasse is a welcoming space and the perfect setting for meetings with a laid-back atmosphere. The lounge is also ideal for private functions. The fireplace and lounge furniture have been specially selected for their feel-good factor, while the adjoining Cinchona Bar means that a well-deserved after-work drink is within easy reach.

facts

size	room capacity [max. capacity]	equipment	minimum number of attendees*
_ 73qm	_ lounge [35 people]	_ daylight _ chimney	_ 15 people



wohzimmer lounge

room rental upon request

* minimum spend for food & beverages from wednesday to saturday is chf 1.500

trainspotting suites

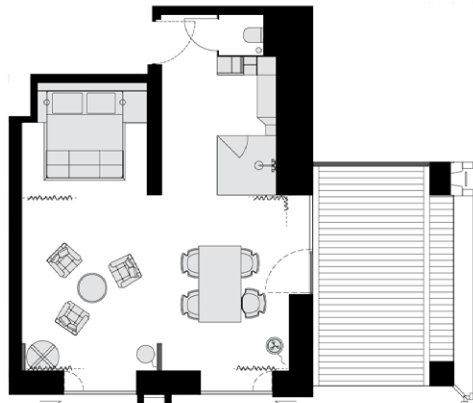
12



overview

Both of the Trainspotting Suites on the 7th floor can be repurposed as exclusive function rooms for up to 6 people.

facts



trainspotting suite

size	room capacity [max. capacity]	equipment	minimum number of attendees
_ 44qm	_ 6 people	<ul style="list-style-type: none">_ daylight_ 55-inch tv_ private terrace	_ none

room rental

upon request

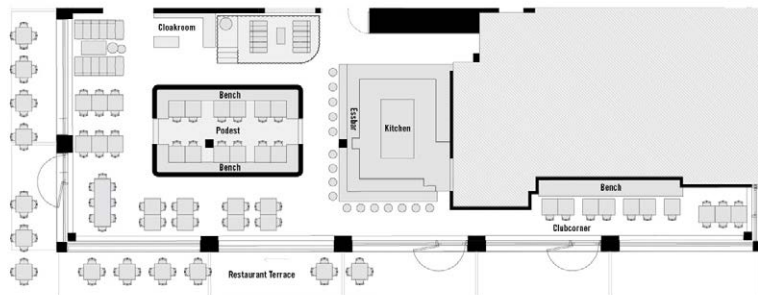
NENI Zürich



overview

At the heart of the 25hours Hotel Langstrasse is the restaurant NENI – and not just in a culinary sense. It's where our guests gather for an oriental lunch or dinner. The restaurant weaves an eclectic brand of eastern Mediterranean cuisine that does far more than fill tummies and satisfy cravings.

facts



neni zürich

size	room capacity [max. capacity]	equipment	minimum number of attendees
_ 218qm	_ for exclusive events [120 people]	_ daylight _ food bar _ in-house system	_ exclusiv at least 60 persons

room rental

upon request

rooms

medium

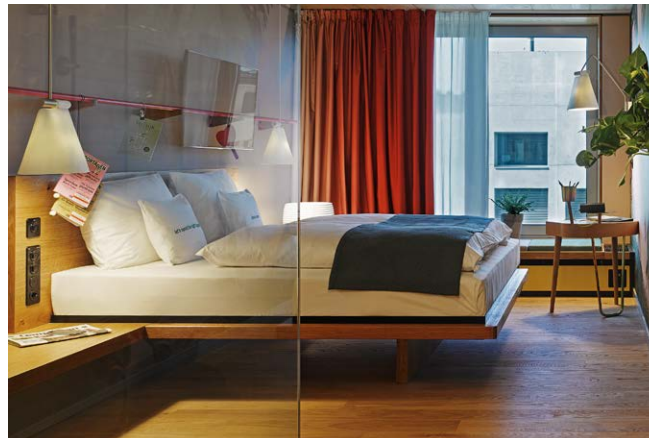
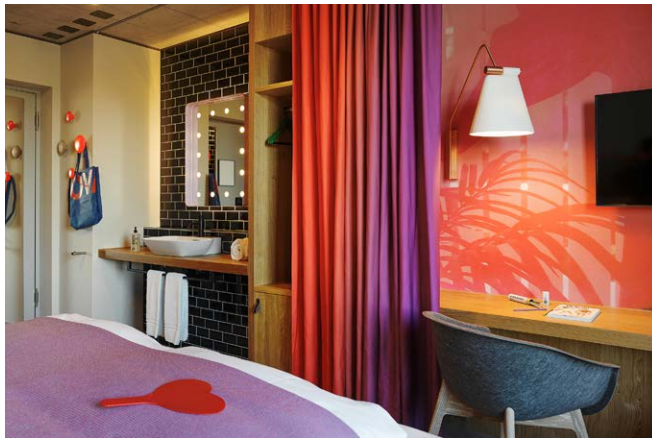
- _ 18sqm / 194sqft
- _ queen-size bed (160cm)
- _ view of the europaallee part of town
- _ air conditioning
- _ free of charge wifi
- _ bathroom with rain shower
- _ ue boom bluetooth speaker
- _ freitag bag

large

- _ 25sqm / 269sqft
- _ king-size bed (180cm) (two single mattresses or a double mattress)
- _ view of the europaallee part of town
- _ air conditioning
- _ free of charge wifi
- _ bathroom with rain shower
- _ ue boom bluetooth speaker
- _ freitag bag

extra large

- _ 35sqm / 377sqft
- _ king-size bed (180cm)
- _ view of the track field
- _ air conditioning
- _ free of charge wifi
- _ bathroom with rain shower
- _ nespresso coffee maker
- _ samova tea station
- _ personal in-room schindelhauer bike
- _ ue boom bluetooth speaker
- _ freitag bag



rooms

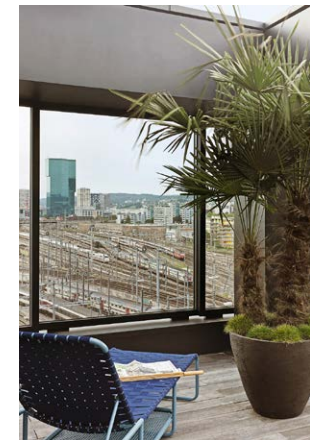
plaza suite

- _ 44sqm / 474sqft
- _ king-size bed (180cm)
- _ panoramic window
- _ air conditioning
- _ free of charge wifi
- _ bathtub and separate rain shower
- _ nespresso coffee maker
- _ personal in-room schindelhauer bike
- _ freitag bag



trainspotting suite

- _ 44sqm / 474sqft
- _ king-size bed (180cm)
- _ view over the track field and to the kaeferberg
- _ air conditioning
- _ free of charge wifi
- _ bathroom with rain shower
- _ nespresso coffee maker
- _ samova tea station
- _ personal in-room schindelhauer bike
- _ separate living area with terrace
- _ ue boom bluetooth speaker
- _ freitag bag



home of
the brave.



conference packages

17

zürich west

basic package

incl. in each package

- room rental
- writing materials
- mineral water
- projector
- projector screen
- flip chart
- moderator's toolkit
- high-speed wifi

incl. in each package

half-day package*

until 12pm or 1-5pm

morning or afternoon coffee break

- nespresso coffee, samova tea, baked goods, fruit basket, fruit juice, mineral water

lunch

- 3-course lunch, based on the head chef's choice, including mineral water

chf 95 per person per day, excl. drinks package

full-day package*

until 5pm

morning coffee break

- nespresso coffee, samova tea, baked goods, fruit basket, fruit juice, mineral water

lunch

- 3-course lunch, based on the head chef's choice, including mineral water

afternoon coffee break

- nespresso coffee, samova tea, baked goods, fruit basket, fruit juice, mineral water

chf 119 per person per day, excl. drinks package

* the full-day package can be booked for groups of 8 people or more.

drinks packages

zürich west

2 hours*

- _ prosecco
- _ house red and white wine
- _ still and sparkling mineral water
- _ soft drinks
- _ orange juice
- _ beer
- _ coffee, espresso, tea

chf 35 per person
each additional hour costs chf 15 per person

4 hours*

- _ prosecco
- _ house red and white wine
- _ still and sparkling mineral water
- _ soft drinks
- _ orange juice
- _ beer
- _ coffee, espresso, tea

chf 55 per person
each additional hour costs chf 15 per person

soft drinks

- _ soft drink buffet in the room

full-day chf 12 per person
half-day chf 8 per person

extras

zürich west

refreshments plus

the following are available as add-ons to the conference packages:

coffee & croissants before the meeting	ice cream after the lunch break	home-made limonana or neni ice tea	freshly squeezed orange juice for the coffee break	coffee all day – not just during coffee breaks
chf 8 per person	chf 3 per person	chf 11 per litres	chf 19 per litres	chf 6 per person

equipment

tech equipment available upon request, pricing per item

moderator's toolkit	chf 25 [one moderator's toolkit is included in the basic package]	conference phone	chf 150
flip chart	chf 30 [one flip chart is included in the basic package]	handheld microphone	chf 30
headset	upon request	tv with a hdmi connection	chf 150
pointer	chf 30		

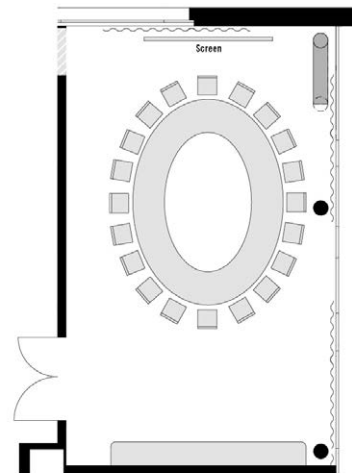
zunftstube



overview

The Zunftstube function room at the 25hours Hotel Zurich West is an exciting interpretation of the classic Zurich venue. With the fixed boardroom seating, the Zunftstube function room is designed for events with up to 20 attendees. It has lots of natural light, a small lounge, and has a projector and screen installed.

facts



zunftstube

size	room capacity [max. capacity]	equipment	minimum number of attendees
<ul style="list-style-type: none">67qm10.4 x 6.5 x 2.5m [l x b x h]	<ul style="list-style-type: none">oval seating [20 people]	<ul style="list-style-type: none">projectorprojector screenbose sound systemflip chartdaylightmoderator's toolkit	<ul style="list-style-type: none">none

room rental

chf 825 for a full day
chf 550 for a half day

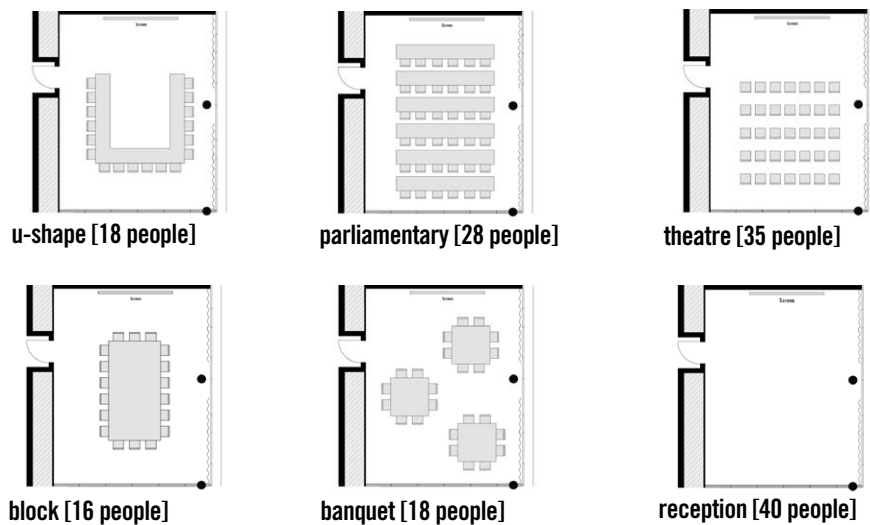
freiraum



overview

The Freiraum function room has plenty of natural light, parquet flooring and air conditioning. The venue is perfectly suited for events with up to 28 people with seminar seating, or up to 35 people with theatre seating. It has a projector, screen and Bose sound system installed.

facts



size	room capacity [max. capacity]	equipment	minimum number of attendees
<ul style="list-style-type: none"> _ 53qm _ 8.1 x 6.5 x 2.5m [l x b x h] 	<ul style="list-style-type: none"> _ u-shape [18 people] _ parliamentary [28 people] _ theatre [35 people] _ block [16 people] _ banquet [18 people] _ reception [40 people] 	<ul style="list-style-type: none"> _ projector _ projector screen _ bose sound system _ flip chart _ daylight 	<ul style="list-style-type: none"> _ none

room rental
 chf 700 for a full day
 chf 500 for a half day

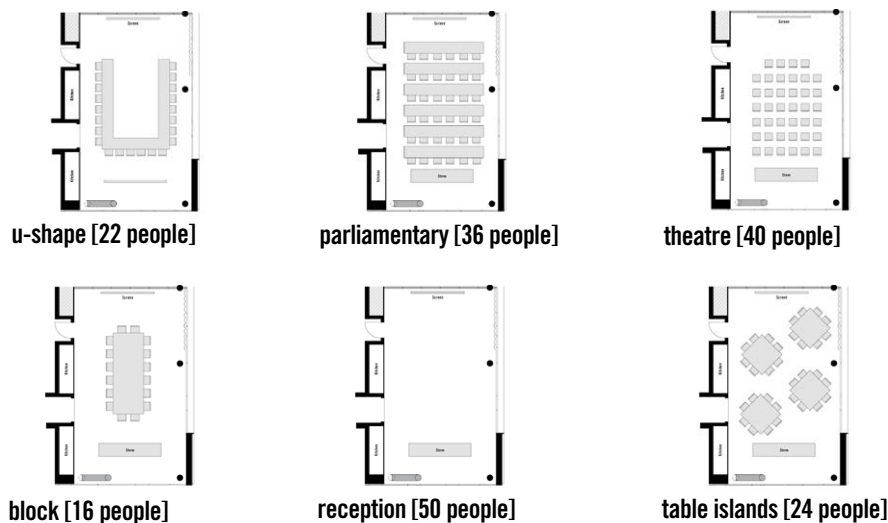
kitchen club



overview

On its own or combined with the Freiraum function room, the Kitchen Club measuring 73sqm is an extraordinary venue for events of all kinds. During the day, it serves as a modern conference space with tons of natural light and space for up to 50 people. If necessary, it can also be kitted out with additional kitchen elements, making it the perfect location for casual team events, cooking courses, and private evening meals.

facts



size	room capacity [max. capacity]	equipment	minimum number of attendees
<ul style="list-style-type: none"> – 72qm – 11.2 x 6.5 x 2.5m [l x b x h] 	<ul style="list-style-type: none"> – u-shape [22 people] – parliamentary [36 people] – theatre [40 people] – block [16 people] – reception [50 people] – table islands [24 people] 	<ul style="list-style-type: none"> – daylight – projector and screen – versatile partitioning of the freiraum function room – kitchen equipment from bulthaup and miele – bose sound system 	<ul style="list-style-type: none"> – none
room rental	<ul style="list-style-type: none"> chf 700 for a full day* chf 500 for a half day* 		

*additional costs will be incurred for use of the kitchen (more information upon request)

kitchen club + freiraum

23

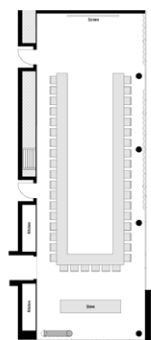


overview

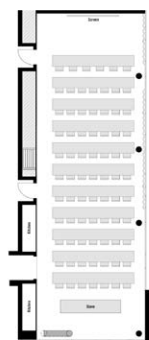
The Freiraum function room and the Kitchen Club combined offer space for up to 100 people. The focal point is the kitchen unit provided by Bulthaup and Miele. Meeting? Workshop? Photoshoot? Product presentation? In addition to cooking courses and meetings in a culinary setting, there are countless options for using this space. We would be happy to advise you personally.

facts

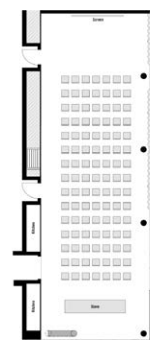
size	room capacity [max. capacity]	equipment	minimum number of attendees
<ul style="list-style-type: none">125qm19.4 x 6.5 x 2.5m [l x b x h]	<ul style="list-style-type: none">u-shape [42 people]parliamentary [70 people]theatre [100 people]tables [96 people]	<ul style="list-style-type: none">daylightprojector and screenversatile partitioning of the freiraum function roomkitchen equipment from bulthaup and mielebose sound system	<ul style="list-style-type: none">none



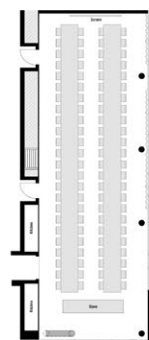
u-shape [42 people]



parliamentary [70 people]



theatre [100 people]



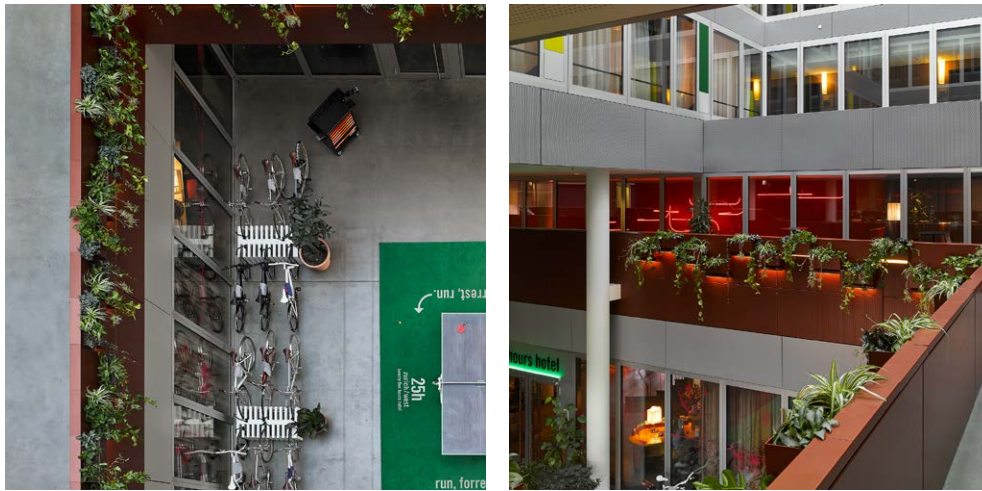
tables [96 people]

room rental

chf 1500 for a full day*
chf 950 for a half day*

*additional costs will be incurred for use of the kitchen (more information upon request)

atrium

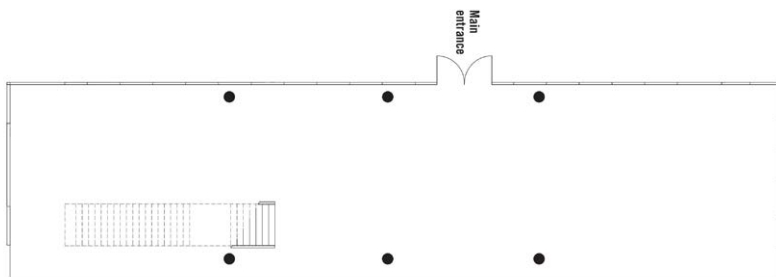


overview

Are you looking for an unusual setting for large product presentations (such as for motor vehicles), photo shoots or an exclusive food festival? Then the Atrium is the right venue for you. The large interior in front of the hotel entrance can be used individually and offers countless combination options with the hotel's other function rooms.

facts

size	room capacity [max. capacity]	equipment	minimum number of attendees
_ 293qm	_ reception [150 people]	_ daylight	_ none



reception [2150 people]

room rental

upon request

NENI zürich west

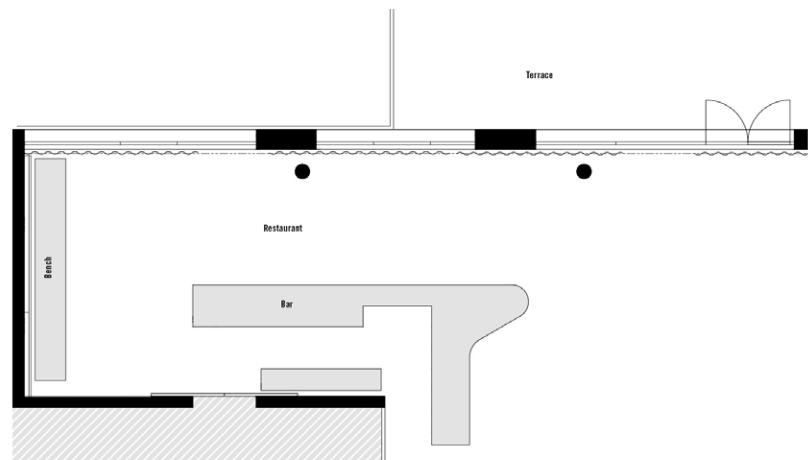


overview

During the day, you can meet at NENI for lunch, and in the evening you can visit the bar for a drink. A sophisticated hotel needs a cosmopolitan culinary concept. This may sound irritating, snobby and a little pretentious. But it isn't. NENI is the brainchild of the Molcho family, who operate the brand's parent company at the heart of the Naschmarkt market in Vienna. The philosophy of their cuisine is much more elaborate than can usually be found in Austria: Israeli, Oriental,

Mediterranean, simply an eclectic mix. Along with the summer terrace, the restaurant offers ample space for the time before, during and after an event at the 25hours Hotel Zurich West.

facts



size	room capacity [max. capacity]	equipment	minimum number of attendees
— 307qm	— reception [150 people] — seated [80 people]	— restaurant seating — daylight	— none

reception [150 people]

room rental

upon request

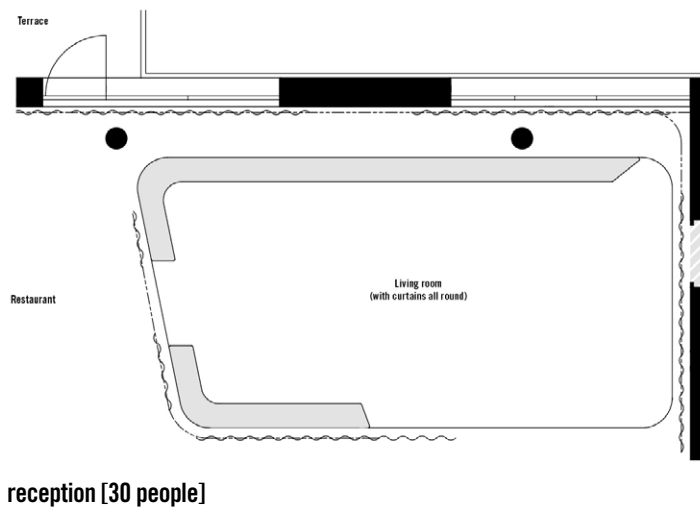
wohnzimmer



overview

The Wohnzimmer lounge on the ground floor of 25hours Hotel Zurich West is not just a place to kick back and relax. It's also the ideal place to hold private functions, break-outs or product presentations in a laid-back setting. Directly connected to the bar and the restaurant, the Wohnzimmer lounge is the perfect meeting point for exchanging ideas and making new contacts.

facts



size	room capacity [max. capacity]	equipment	minimum number of attendees
— 38qm	— reception [30 people]	— lounge seating	— none
— 8.5 x 4.5 x 2.5m [l x b x h]		— daylight	
room rental	upon request		

rooms

small

- _ 18sqm / 194sqft
- _ carpeted floor
- _ single bed (120cm)
- _ air conditioning
- _ free of charge high-speed wifi
- _ bathroom with rain shower
- _ ue boom bluetooth speaker
- _ freitag bag



medium bunk bed

- _ 22qm / 237sqft
- _ 2 single beds (each 120cm) as bunk bed
- _ air conditioning
- _ free of charge high-speed wifi
- _ bathroom with rain shower
- _ ue boom bluetooth speaker
- _ freitag bag



rooms

medium

- _ 22-23sqm / 237-248sqft
- _ carpeted floor
- _ queen-size bed (160cm)
- _ view to the atrium or to the business plaza
- _ air conditioning
- _ free of charge high-speed wifi
- _ bathroom with shower
- _ ue boom bluetooth speaker
- _ freitag bag

large

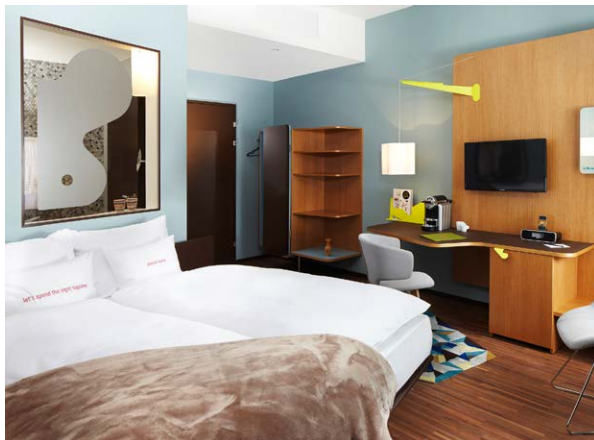
- _ 26sqm / 280sqft
- _ twin- (2 single beds each 90cm) or king-size bed (180cm) upon availability
- _ wooden floor
- _ view to the park
- _ air conditioning
- _ free of charge high-speed wifi
- _ bathroom with rain shower
- _ ue boom bluetooth speaker
- _ freitag bag



rooms

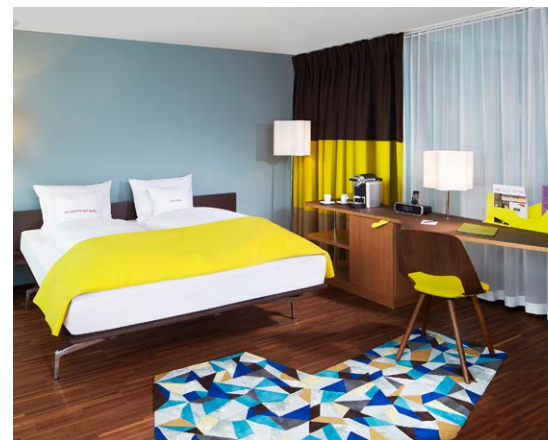
extra large

- _ 27sqm / 290sqft
- _ rooms at the attic
- _ wooden floor
- _ king-size bed (180cm)
- _ terrace
- _ air conditioning
- _ free of charge high-speed wifi
- _ bathroom with rain shower
- _ ue boom bluetooth speaker
- _ freitag bag
- _ nespresso coffee maker
- _ samova tea station



haeberli-suite

- _ 34sqm / 366sqft
- _ city view
- _ wooden floor
- _ king-size bed (180cm)
- _ south-facing balcony
- _ air conditioning
- _ free of charge high-speed wifi
- _ bathroom with rain shower
- _ freestanding bathtub
- _ ue boom bluetooth speaker
- _ freitag bag
- _ nespresso coffee maker
- _ samova tea specialities



event ideas

pop-up

The patterns have been returned to the drawers, the sewing machine is now gathering dust. And the most important thing: The first collection is ready to wear. Before you take it to Milan, Paris, or London, how about your own pop-up at one of our 25hours Hotels? Even the biggest designers started small and unconventionally and presented their pieces to the public. Or is there a new product launch in the pipeline? Thanks to our locations in the major cities in Germany, Austria, and Switzerland, the potential customer base is already present and won't miss your pop-up.



product launch

From lip balm, to the new novel series, right up to sports cars packed with horse power - good ideas need effective launches in order to have a successful start on the market. The 25hours locations are as diverse as the products unique. Be it big and grandiose or cosy and small - do you already have a brilliant idea and your breakthrough is within reach? Maybe you still need a little inspiration.



press conference

Your press appearance really needs to make waves? To do this, not only the product has to be right, but also the venue. At our 25hours Hotels in Germany, Austria, and Switzerland, we offer personalised solutions for the perfect setting. Classic conference rooms with seating, cosy lounges with a fireplace or a panoramic view over the city - whatever suits your product or target groups best, we'll work together to host the perfect press conference.



assessment centre

Let's get down to business. Which of the applicants is potentially the right candidate for a management role? Individual or group assessments, management audits, or an evaluation assessment centre - when discretion has the top priority, we're the right choice. Even just for a cosy get-together at one of our restaurants or bars - there is a personalised solution for all kinds of requests. And the possibilities are endless at the 25hours Hotels.



event ideas

album release

The new album: Check! The big day is here. Now, the big wide world should listen and recognise the true artisty. We have exactly the right locations for this - be it cosy and intimate or big and fabulous. For twenty, a hundred, or even hundreds of listeners. With a live set or a sound system with bass tubes and the perfect sound. We even have instruments available on site at some hotels. Just do your thing and win the audience over with your new album. We have everything you need and the perfect spaces for a flawless release party.



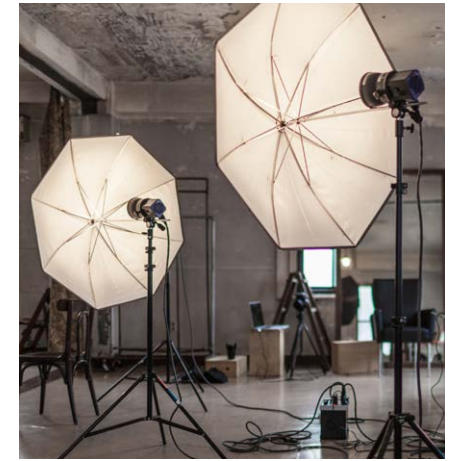
casting

Your company is in its infancy and your new offices aren't ready yet? We would be happy to provide our rooms for castings and recruitment interviews. Whether it's on a small scale or somewhat larger. Be it individual hotel rooms, the lobbies, bars, or restaurants - we have the right venue for any casting event. Just click through to have a look or come and visit us in person. Many rooms can be adjusted as required to meet your exact needs.



fotoshooting

The new lookbook for the coming season needs to be shot? The next edition of the magazine has a feature on Berlin? Zurich or Hamburg? The photographer is booked, but the matter of the right location hasn't been resolved? Our 25hours Hotels, with their individual hotel concepts, offer tailored spaces for photoshoots with a passion for detail. Whether it's in a bathtub with a view over the Vienna MuseumsQuartier, on the roof terrace at the 25hours Hotel Bikini Berlin with a view of chimpanzees and elephants, or in the colourful, urban world of the 25hours Hotel Frankfurt The Goldman in Frankfurt's east end. Our hotels are as diverse as the fashion and culture themselves.



how to find us

langstrasse



arriving on public transport

From Zurich central station — Take the escalator in Sector D to reach ‘Passage Sihlquai’. Follow the signs for ‘Europaallee’. At the exit, turn right onto Europaallee; the road continues on into Lagerstrasse. The hotel is approximately 600 m from the main railway station, on the corner of Lager-/Langstrasse.

Alternatively, take the bus number 31 toward Schlieren outside the railway station. Travel 3 stops and alight at Militär/ Langstrasse. Ticket: CHF 2.70 (short trip).

From Zurich Airport — All trains depart the airport railway station for Zurich Main Station (HB) from platforms 3 and 4. Ticket: CHF 6.80; with half-fare ticket: CHF 3.40

arriving by car

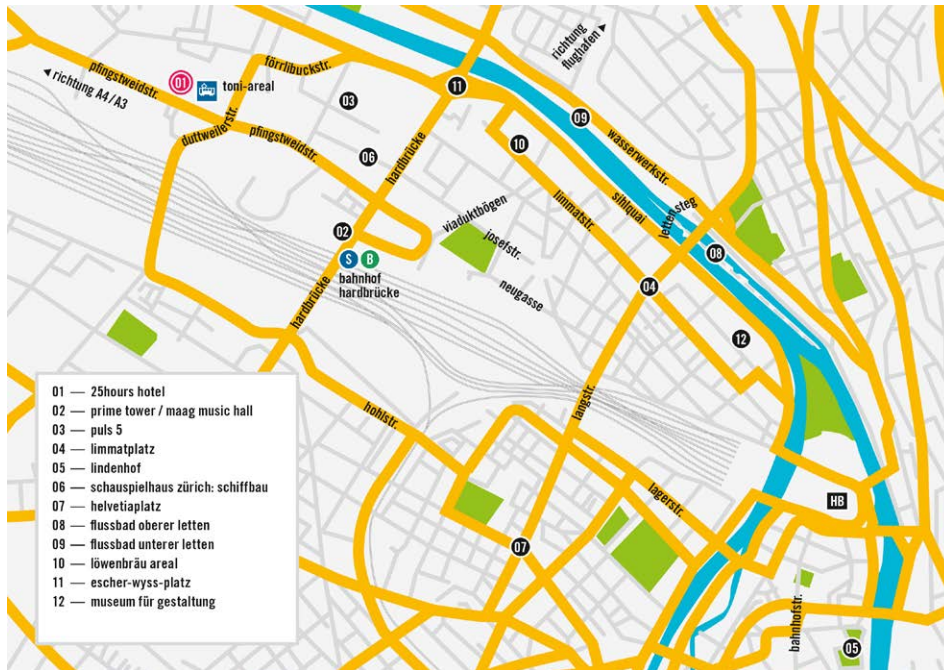
Arriving from the direction of Lucerne on the A4 — Leave the motorway at junction 31-Zurich-West. Take the A3W and follow the signs for Zurich City.

Arriving from the direction of Chur on the A3 — Take the A3W and follow the signs for Zurich City. Proceed straight on to Manessestrasse and then turn left onto Stauffacherquai (follow the signs for City/Aussersih/Casino). Continue straight onto Kasernenstrasse. Proceed for approx. 900 m and then turn left onto Militärstrasse. Follow the road for approx. 600 m and then turn right onto Kanonengasse. After 75 m turn left onto Lagerstrasse. The hotel is on the right after 150 m (no. 150).

Arriving from the direction of Berne/Basel on the A1/E60 — Take the A1/A3/E60 toward Zurich/ Baden and follow the signs for Zurich/ Wettingen-Ost. Then follow the signs for Zurich City. Take the exit at Zurich-Hardturm. Proceed along Route 1/3 toward Hardturm. Stay in the right-hand lane on Pfingstweidstrasse. Take a sharp right onto Duttweilerbrücke at Toni Areal. After the bridge turn left onto Hohlstrasse. Continue for 1.5 km and then turn left onto Feldstrasse. After 200 m turn right onto Schöneegg-/Militärstrasse. Continue for 450 m and then turn left onto Kanonengasse. After 75 m turn left onto Lagerstrasse. The hotel is on the right after 150 m (no. 150). The entrance to the underground parking is approx. 100 m before the hotel. The hotel has a limited number of parking spaces. There is additional parking in City Parkhaus, Gessnerallee, Gessnerallee 11, 8001 Zürich; open 24/7.

how to find us

zürich west



arriving on public transport

From Zurich central station, take tram no. 4 towards Bahnhof Altstetten and alight at Toni-Areal. Journey time of approximately 10 minutes. Ticket: CHF 4.40; CHF 3.10 with a Swiss half-price season ticket.

From Zurich Airport, take the S16 train departing at 1 and 31 minutes past the hour, and alight at Hardbrücke. From there, take tram no. 4 towards Bahnhof Altstetten and alight at Toni-Areal. Alternatively, you can take any other train (InterRegio or InterCity) into Zurich central station and pick up tram no. 4 there, heading towards Bahnhof Altstetten and alighting at Toni-Areal. Journey time of approximately 30 minutes. Ticket: CHF 6.80; CHF 3.40 with a Swiss half-price season ticket.

arriving by car

Arriving from the direction of Lucerne on the A4 /E41, take exit 59 (Limmattaler Kreuz) and head towards the city centre on the A1.

Arriving from the direction of Bern/ Basel on the A1/ E60, you will automatically find yourself heading into the city on the A1. Once on the A1, take the exit towards Zürich-Hardturm and join the A3. Then take route 1/3 towards Hardturm. Exit the motorway, staying on the right, and you will end up on Pfingstweidstrasse. The 25hours Hotel Zürich West is on the left-hand side after 900 m (building no. 102). Parking spaces are available.

Arriving from the direction of Chur on the A3W, after the end of the motorway, turn left off Manessestrasse and onto route 3/4 towards Bern/Basel/Zurich airport. Follow Seebahnstrasse straight ahead, then turn left onto Hohlstrasse. Continue to follow route 3/4, then turn right onto Duttweilerstrasse, followed by a left-hand turn onto Pfingstweidstrasse. The 25hours Hotel Zürich West is on the right-hand side after 200 m (building no. 102). Parking spaces are available.

contact

25hours hotel langstrasse

langstrasse 150
8004 zürich

p +41 44 576 58 07
events.langstrasse@25hours-hotels.com

25hours hotel zürich west

pfingstweidstrasse 102
8005 zürich

p +41 44 577 28 20
events.zuerichwest@25hours-hotels.com