



ANANTARA

GRAND HOTEL  
KRASNAPOLSKY  
AMSTERDAM

GRAND HOTEL KRASNAPOLSKY

A LANDMARK IN THE  
HEART OF AMSTERDAM



# WELCOME TO ANANTARA GRAND HOTEL KRASNAPOLSKY AMSTERDAM

Where exciting city life meets contemporary luxury – Anantara Grand Hotel Krasnapolsky Amsterdam provides a setting for vibrant happenings and a place to relax and explore.

Set in the heart of the city, the hotel is uniquely equipped for functions and business conferences, with the train station just moments away, valet parking and a dedicated entrance for event guests.

Beautiful venues, including a grand ballroom and a Michelin-starred restaurant, are configured and customised to your

specifications to host high-powered board meetings and training sessions or extravagant gala dinners and international conventions for up to 1,500 guests.

A dedicated meeting and events team takes care of every detail, from award-winning cuisine and cocktails to spectacular decor and entertainment. AV and IT technicians are on standby to ensure smooth-running success.

Explore what's possible with events at Anantara Grand Hotel Krasnapolsky Amsterdam.



# THE CHARMS OF AMSTERDAM AT YOUR FINGERTIPS

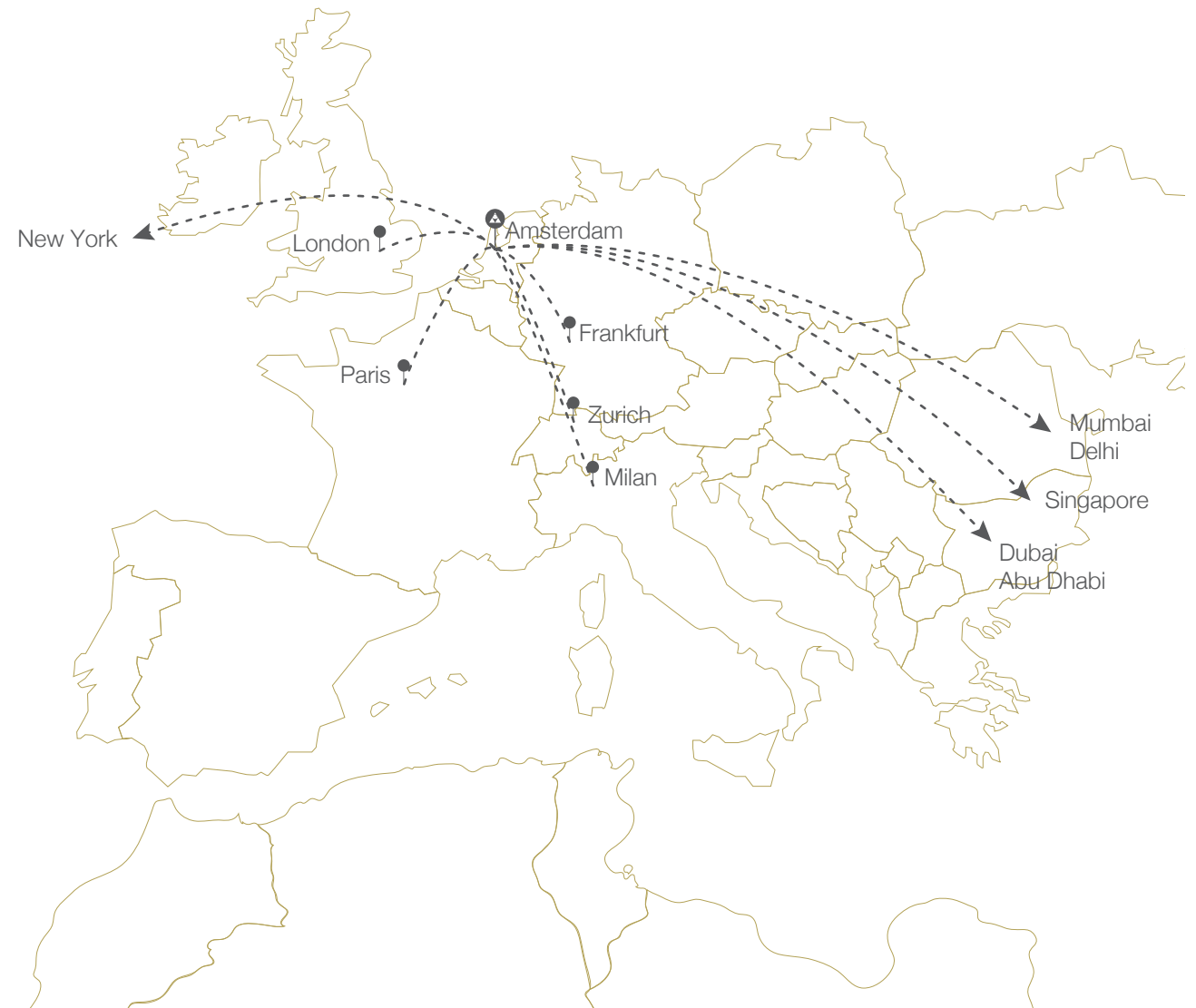
Presiding over Dam Square with views of the National Royal Palace, Anantara Krasnapolsky is perfectly positioned in the historic heart of the city just a short stroll from the central railway station.

With designer shopping, heritage experiences, delectable dining and world-class museums all on your doorstep, guests find themselves in the ideal location to experience the best of what Amsterdam has to offer.



## INTERNATIONAL TRAVEL MAP

CITY	FLIGHTS PER DAY	TRAVEL TIME
LONDON - UK	26-49	1 H 15
NEW YORK - USA	5-6	7 H 15
ZURICH - SWITZERLAND	8-10	1 H 30
SINGAPORE	2	13 H 20
DUBAI AND ABU DHABI - UAE	5	7 H
MUMBAI - INDIA	1	9 H 20
DELHI - INDIA	2	9 H
MILAN - ITALY	10-13	1 H 45
FRANKFURT - GERMANY	8-11	1 H 05
PARIS - FRANCE	8-11	1 H 25



## LOCAL TRAVEL MAP

Whether arriving in The Netherlands by plane or train, Anantara Grand Hotel Krasnapolsky Amsterdam is easily accessed.

Amsterdam Schiphol Airport is approximately a 25-minute drive from the hotel and offers direct and connecting services to various destinations worldwide. Our team is delighted to arrange private transfers.

The direct train service operates every 17 minutes to and from Schiphol Airport and arrives at Amsterdam Central Station in just 15 minutes.

Amsterdam Schiphol Airport (AMS): 25 km  
 Dam Square tram stop: 0.1 km  
 Rokin Metro station: 0.3 km  
 Central Metro station: 0.7 km



— Car Route

## MAIN TRANSFER VENUES

- 1 - Amsterdam Schiphol Airport (AMS)
- 2 - Rotterdam The Hague Airport (RTM)
- 3 - Eindhoven Airport (EIN)
- 4 - Maastricht Aachen Airport (MST)
- 5 - Groningen Airport Eelde (GRQ)

VENUE	MEANS OF TRANSPORT	TRIP LENGTH
1	CAR TRAIN	25 min 15 min
2	CAR	1 H 10
3	CAR	1 H 40
4	CAR	2 H 20
5	CAR	2 H 10

# PLACES OF INTEREST

The Rijksmuseum



Van Gogh Museum



Anne Frank House



Vondelpark

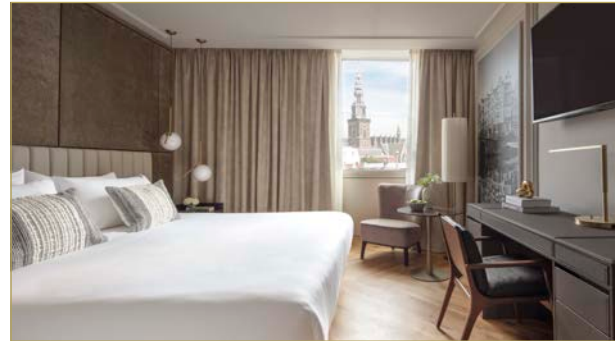


The Jordaan District



# ACCOMMODATION

Designed from 55 canal houses dating back to 1855, Anantara Grand Hotel Krashapolsky Amsterdam welcomes guests in 402 rooms and suites that blend 21st-century sensibilities with subtle historical references. Relax in comfort amid soothing natural colour schemes and chic, modern design accents.



### Deluxe Room

26 sqm

Maximum occupancy: 2 adults

Total number of rooms: 188

- Feature bathroom
- Luxurious amenities



### Premium Room

30 sqm

Maximum occupancy: 2 adults and 1 child

Total number of rooms: 119

- Feature bathroom
- Luxurious amenities



### Grand Premium Room

38 sqm

Maximum occupancy: 2 adults and 2 children

Total number of rooms: 12

- Contemporary style and warm tones
- Feature bathroom
- Separate seating area





### Premium Dam View

30 sqm  
Maximum occupancy: 2 adults  
Total number of rooms: 15

- Feature bathroom
- Overlooking Dam Square



### Grand Premium Dam View

34 sqm  
Maximum occupancy: 2 adults and 1 child  
Total number of rooms: 6

- Contemporary style and warm tones
- Overlooking Dam Square



### Premium Rooftop & Terrace

30 sqm  
Maximum occupancy: 2 adults and 1 child  
Total number of rooms: 15

- Private terrace
- Top-floor views of the city





### Triple Room

38 sqm | Maximum occupancy: 3 adults  
Total number of rooms: 10

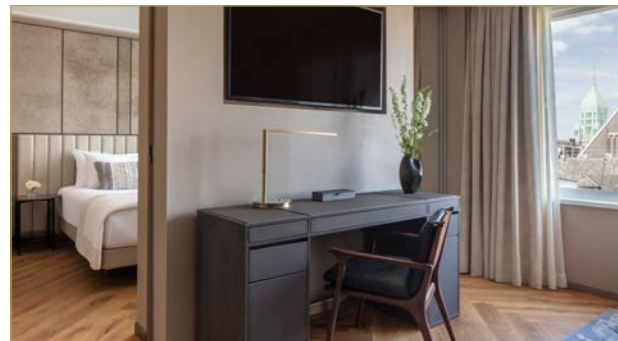
- Permanent bedding for three
- Feature bathroom with rain shower



### Family Room

50 sqm | Maximum occupancy: 4 adults  
Total number of rooms: 8

- Permanent bedding for four
- Feature bathroom



### Junior Suite

38 sqm  
Maximum occupancy: 2 adults and 2 children  
Total number of suites: 9

- Newly renovated
- Living area



## Suite

55 sqm

Maximum occupancy: 2 adults and 2 children

Total number of suites: 11

- Open-plan living
- Rain shower



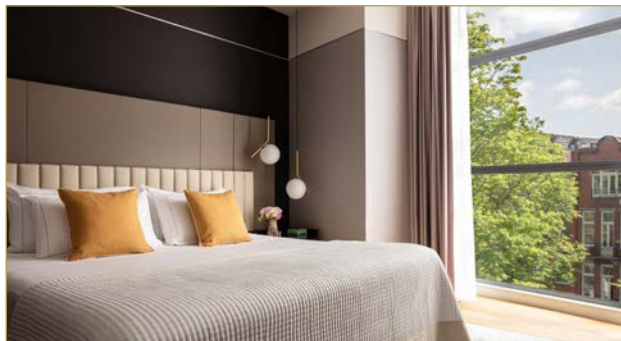
## Dam View Suite

54 sqm

Maximum occupancy: 2 adults and 2 children

Total number of suites: 4

- Overlooking Dam Square
- Open-plan living



## Canal View Suite

78 sqm

Maximum occupancy: 2 adults and 2 children

Total number of suites: 2

- Overlooking the canals
- Open-plan living
- Separate dining and living area





### Terrace Suite

52 sqm

Maximum occupancy: 2 adults and 2 children

Total number of suites: 1

- Newly renovated
- Luxurious amenities



### Presidential Suite Rooftop Terrace

95 sqm

Maximum occupancy: 4 adults

Total number of suites: 1

- Duplex with two ensuite bedrooms
- Private roof terrace with 180° views



### Royal Suite Dam View

150 sqm

Maximum occupancy: 2 adults and 1 child

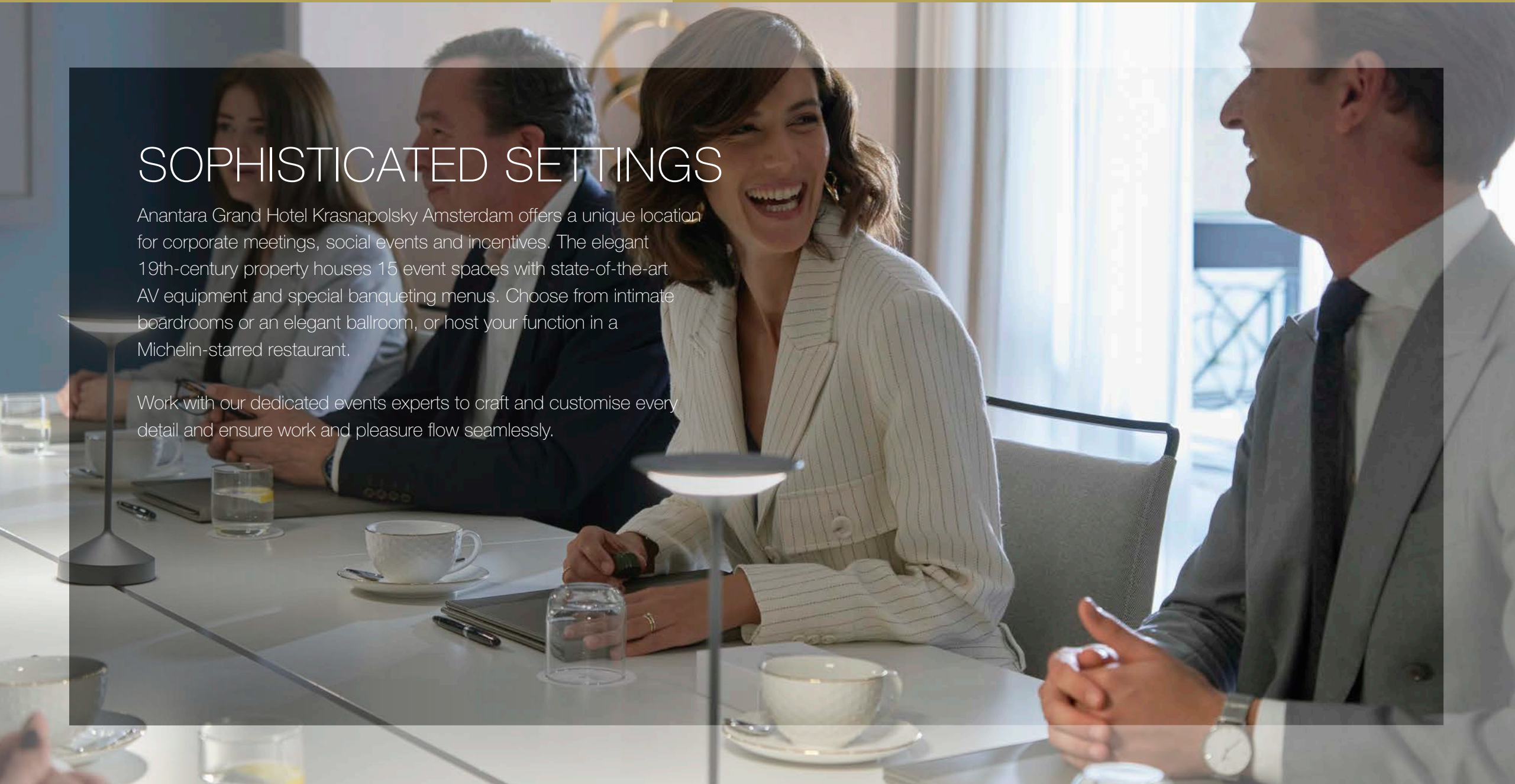
Total number of suites: 1

- Overlooking Dam Square and the Royal Palace
- Reception area and meeting room

# SOPHISTICATED SETTINGS

Anantara Grand Hotel Krasnapolsky Amsterdam offers a unique location for corporate meetings, social events and incentives. The elegant 19th-century property houses 15 event spaces with state-of-the-art AV equipment and special banqueting menus. Choose from intimate boardrooms or an elegant ballroom, or host your function in a Michelin-starred restaurant.

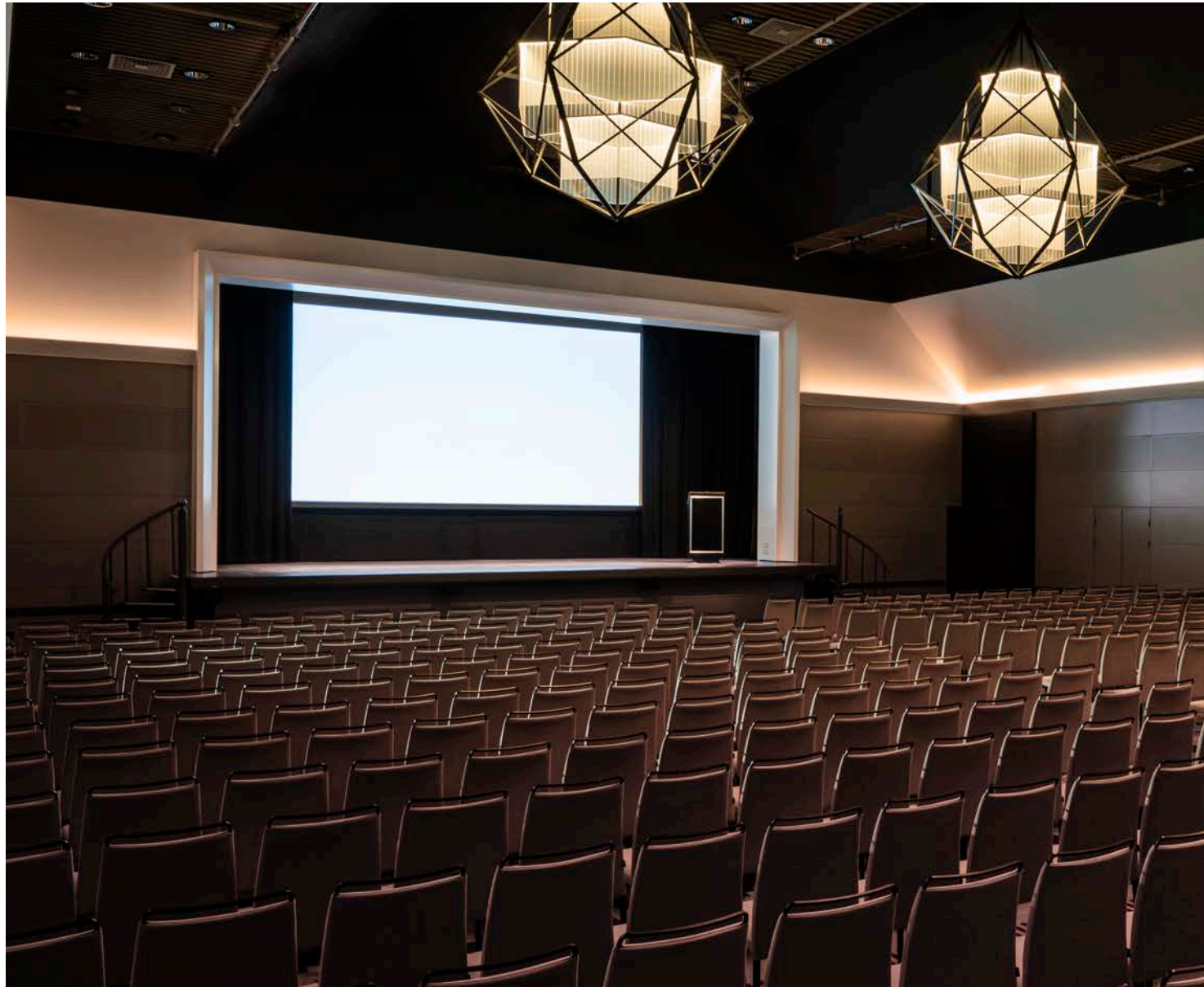
Work with our dedicated events experts to craft and customise every detail and ensure work and pleasure flow seamlessly.



## CONFERENCE AND MEETING FACILITIES

Our modern venues are equipped with state-of-the-art technology and extensive facilities to cater for every kind of social and corporate function.

MEETING ROOM	AREA (M <sup>2</sup> )	DIMENSIONS (in M LxWxH)	BANQUET	BOARD ROOM	CLASS ROOM	COCKTAIL	U-SHAPE	THEATRE	CABARET	DAYLIGHT
Grand Ballroom	510	30 x 17 x 7,5	320	50	346	600	90	700	320	NO
Wintergarden	462	14 x 33	300	20	360	500	102	560	288	YES
Emerald I, II or III	71	8,3 x 8,6 x 4	50	18	27	60	24	81	32	YES
Emerald I + II or II + III	142	16,6 x 8,6 x 4	110	24	63	125	48	186	64	YES
Emerald I, II and III	215	25 x 8,6 x 4	170	32	150	225	66	277	96	YES
Opal I	131	10,5 x 12,5 x 4	80	20	60	100	30	160	48	YES
Opal II	181	14,5 x 12,5 x 4	120	30	110	150	42	220	96	YES
Diamond	240	24 x 10 x 3	170	40	150	225	78	333	152	YES
Ruby	210	27 x 7,8 x 3,6	120	40	90	175	75	252	120	YES
Jade	40	8 x 5 x 2,5	-	20	-	50	21	50	48	YES
Amber	130	15,5 x 6,3 x 3,4	70	42	54	90	42	120	56	YES
Boardroom I, II or III	13,5	4,5 x 3 x 2,5	-	8	-	-	-	-	-	YES
Noble	45	7 x 6 x 2,7	-	18	-	40	21	50	20	YES



## Grand Ballroom

510 sqm

Size (LxWxH m) 30 x 17 x 7.5

Highly versatile, with a range of layouts for conferences, exhibitions, banquets and even challenging events (like a car launch), the ballroom features removable walls to give access to Wintergarden and the 3 Emeralds. A built-in stage with high-tech sound and lighting is set off by a neutral palette of greys and whites, paired with modern, diamond-shaped chandeliers. Large side panels adorning both facing walls may be branded on request. On the ground floor with a separate entrance from the street, the venue is close to the car park for guests' convenience.

---

### Up to 700 guests

Theatre	700 guests
Classroom	346 guests
U-shape	90 guests
Boardroom	50 guests
Cabaret	320 guests
Cocktail	600 guests
Banquet	320 guests

## Wintergarden

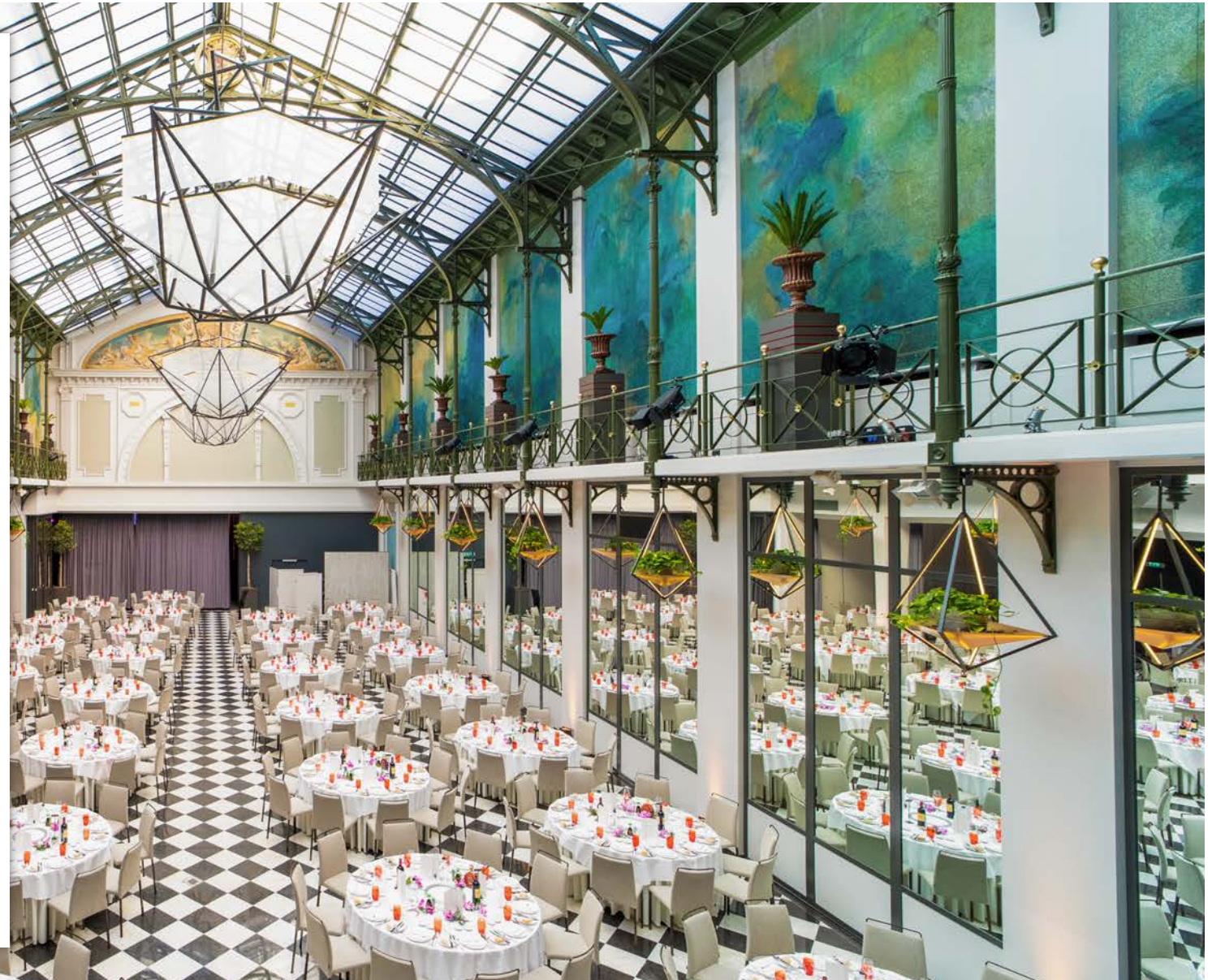
462 sqm

Size (LxWxH m) 14 x 33

Our famous Wintergarden is a cavernous hall with glass ceiling, wall frescoes and mirrors, and a second-storey wrap-around balcony. Just like a Belle Époque ballroom, the space is a historic Amsterdam event venue and ideal for receptions, galas and private celebrations.

### Up to 560 guests

Theater	560 guests
Dinner	300 guests
Cabaret	288 guests
Classroom	360 guests
U-shape	102 guests
Cocktail	500 guests







## Emerald I, II or III

71 sqm

Size (LxWxH m) 8.3 x 8.6 x 4

Adjacent to Wintergarden, the 3 multifunctional Emerald rooms can be combined for conferences for up to 243 delegates, then separated for breakout sessions. With a separate entrance from the street, they're conveniently located near the car park.

---

### Up to 81 guests

Theatre	81 guests
Classroom	27 guests
U-shape	24 guests
Boardroom	18 guests
Cabaret	32 guests
Cocktail	60 guests
Banquet	50 guests

## Emerald I + II or II + III

142 sqm

Size (LxWxH m) 16.6 x 8.6 x 4

Adjacent to Wintergarden, the 3 multifunctional Emerald rooms can be combined for conferences for up to 243 delegates, then separated for breakout sessions. With a separate entrance from the street, they're conveniently located near the car park.

---

### Up to 186 guests

Theatre	186 guests
Classroom	63 guests
U-shape	48 guests
Boardroom	24 guests
Cabaret	64 guests
Cocktail	125 guests
Banquet	110 guests





## Emerald I, II and III

215 sqm

Size (LxWxH m) 25 x 8.6 x 4

Adjacent to Wintergarden, the multifunctional Emerald rooms can be combined for conferences for up to 243 delegates, then separated for breakout sessions. With a separate entrance from the street, they're conveniently located near the car park.

---

### Up to 277 guests

Theatre	277 guests
Classroom	150 guests
U-shape	66 guests
Boardroom	32 guests
Cabaret	96 guests
Cocktail	225 guests
Banquet	170 guests

## Opal I

131 sqm

Size (LxWxH m) 10.5 x 12.5 x 4

Flooded with natural light, the Opal rooms feature a built-in stage and can be combined for meetings for up to 440 delegates for theatre-style events. Make use of a registration desk out front and a large adjacent coffee-break space. With designated access from the street, the Opal rooms are located conveniently near the parking area.

### Up to 160 guests

Theatre	160 guests
Classroom	60 guests
U-shape	30 guests
Boardroom	20 guests
Cabaret	48 guests
Cocktail	100 guests
Banquet	80 guests





## Opal II

181 sqm

Size (LxWxH m) 14.5 x 12.5 x 4

Flooded with natural light, the Opal rooms feature a built-in stage and can be combined for meetings for up to 440 delegates for theatre-style events. Make use of a registration desk out front and a large adjacent coffee-break space. With designated access from the street, the Opal rooms are located conveniently near the parking area.

---

### Up to 220 guests

Theatre	220 guests
Classroom	110 guests
U-shape	42 guests
Boardroom	30 guests
Cabaret	96 guests
Cocktail	150 guests
Banquet	120 guests

## Diamond

240 sqm

Size (LxWxH m) 24 x 10 x 3

Located on the second floor overlooking the Wintergarden, Diamond is flooded with natural light from both sides, making it ideal for daytime events. With a private foyer area perfect for coffee breaks, the space accommodates up to 333 guests in a theatre configuration and is accessible by elevator and stairs.

---

### Up to 333 guests

Theatre	333 guests
Classroom	150 guests
U-shape	78 guests
Boardroom	40 guests
Cabaret	152 guests
Cocktail	225 guests
Banquet	170 guests





## Ruby

210 sqm

Size (LxWxH m) 27 x 7.8 x 3.6

With a fireplace and chandeliers, original ornaments on the walls and expansive windows, Ruby is uniquely elegant. Located so that guests must walk along the balcony overlooking the Wintergarden for access, the space immediately creates a sense of grandeur perfect for banquets or informal gatherings of up to 252 guests.

### Up to 252 guests

Theatre	252 guests
Classroom	90 guests
U-shape	75 guests
Boardroom	40 guests
Cabaret	120 guests
Cocktail	175 guests
Banquet	120 guests

## Jade

40 sqm

Size (LxWxH m) 8 x 5 x 2.5

Ideal for all-day brainstorming sessions, with a large touchscreen for presentations and a counter for refreshments, Jade overlooks the iconic 18th-century Wintergarden Hall and is accessible by elevator and stairs. With the capacity for up to 50 guests in a theatre-style configuration, it's ideal for board meetings or small group presentations.

---

### Up to 50 guests

Theatre	50 guests
U-shape	21 guests
Boardroom	20 guests
Cabaret	16 guests
Cocktail	50 guests







## Amber

130 sqm

Size (LxWxH m) 15.5 x 6.3 x 3.4

With high-tech audiovisual and lighting systems, Amber is perfect for mid-sized presentations. Set on the ground floor, conveniently close to the main entrance and our 3 boardrooms, the space enjoys natural daylight from above.

---

### Up to 120 guests

Theatre	120 guests
Classroom	54 guests
U-shape	42 guests
Boardroom	42 guests
Cabaret	56 guests
Cocktail	90 guests
Banquet	70 guests

## Boardroom I, II or III

13.5 sqm

Size (LxWxH m) 14.5 x 3 x 2.5

Private and sophisticated, with lots of natural daylight and a full array of meeting equipment, the 3 boardrooms are ideal for use as office space or for an intimate meeting. They can be booked with little notice and are always ready to go.

---

### Up to 8 guests

Boardroom      8 guests





## Noble

45 sqm

Size (LxWxH m) 7 x 6 x 2.7

The only meeting room located on the second floor, Noble is set back from the guest rooms to ensure your complete privacy. It comfortably accommodates up to 50 guests and is accessible by the elevator and stairs.

---

### Up to 50 guests

Theatre	50 guests
U-shape	21 guests
Boardroom	18 guests
Cabaret	20 guests
Cocktail	40 guests

# GASTRONOMY

Anantara Krasnapolsky boasts several unique restaurants that are perfect for hosting special events. From intimate, romantic dinners to larger celebrations, each venue offers a unique atmosphere and exceptional cuisine. Whether you're looking to host a dinner party, a birthday celebration, or a grand wedding reception, our outlets provide the perfect combination of food, atmosphere, and service.





## Wintergarden

---

The cavernous hall of the iconic 18th-century Wintergarden features a glass ceiling, wall frescoes and mirrors, and a second-storey wrap-around balcony. Just like a Belle Époque ballroom, the space is ideal for receptions, galas and private celebrations.



## Grand Café Krasnapolsky

---

With magnificent views of Dam Square, Grand Café Krasnapolsky is a historical setting that lends a dash of elegance to your event. Famous for the Krasnapolsky Afternoon Tea and its dedicated Cake Room, it's ideal for special celebrations, including baby showers or launch events and available semi-privately for up to 30 attendees.



## The White Room

---

First opened in 1885, The White Room is listed and considered Amsterdam's oldest restaurant in its original condition. Now a Michelin-starred dining destination helmed by genius chef Jacob Jan Boerma, it's a unique setting for an unforgettable event and is available exclusively for 20 to 50 attendees.



## Bar The Tailor

---

With elegant decor indoors and out in the courtyard, and with a selection of bespoke cocktails and local distilled drinks, Bar The Tailor is perfectly suited to daytime or evening cocktail receptions of up to 70 attendees.



## EPICUREAN MOMENTS TAILORED TO THE VERY LAST DETAIL

Drawing from the renowned expertise of Anantara in creating the most unique gastronomic journeys, every event at Anantara Grand Hotel Krasnapolsky Amsterdam is an elegant feast of flavours and possibilities.

Magnificent venues pair to perfection with a curated selection of tailor-made banqueting services, that cater to both corporate events and social celebrations. Using the most singular combination of local authentic flavours and refined ingredients, the diversity of menus and solutions crafted by our experienced Chefs are sure to impress.

From delectable coffee breaks and brunches designed for productive meetings, to the most perfect a la carte menus and buffet with live cooking stations.

From elegant cocktails to the most luxurious gala menus.

From the classic Champagne bar to the wonders of contemporary mixology.

Whether for a corporate event or a social celebration.

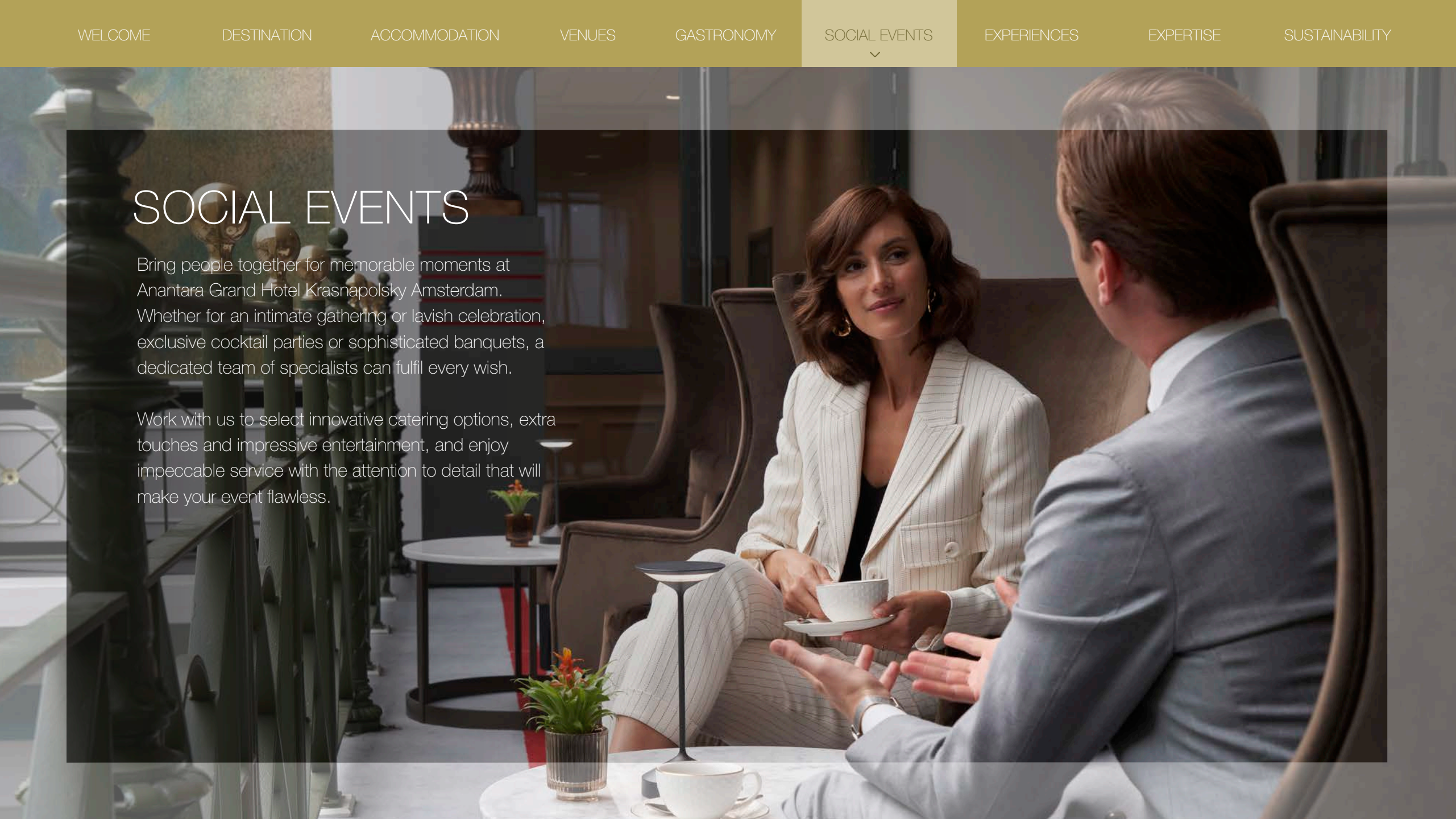
Every detail is prepared by an experienced team to the very last detail, with the luxury touch and dedicated service of Anantara.

[Unveil a world of flavours and possibilities >](#)

# SOCIAL EVENTS

Bring people together for memorable moments at Anantara Grand Hotel Krasnapolsky Amsterdam. Whether for an intimate gathering or lavish celebration, exclusive cocktail parties or sophisticated banquets, a dedicated team of specialists can fulfil every wish.

Work with us to select innovative catering options, extra touches and impressive entertainment, and enjoy impeccable service with the attention to detail that will make your event flawless.





A photograph of a man and a woman on bicycles in Amsterdam. The woman is on the left, wearing a white sleeveless top and light-colored pants, smiling and looking towards the man. The man is on the right, wearing a light-colored polo shirt and light-colored pants, looking back at the woman. They are on a bridge over a canal, with many bicycles parked along the railing. The background shows traditional Dutch architecture and trees.

## IMMERSE IN AMSTERDAM

At Anantara, we take you to the road less travelled to experience the best of each locale. In Amsterdam, this means behind-the-scenes insights into a distinct and vibrant culture. Whether you're in search of beauty, wonder or everlasting memories, join us on a journey to connect with this unique destination.



## THE DIAMOND EXPERIENCE

---

With a centuries-old tradition of diamond trading, Amsterdam is a city that sparkles. Discover how stones are cut and polished at a family-run workshop and get an insight into how rare gems are assessed.

Sip Champagne as the experts clean your own precious pieces before returning to the hotel by canal boat or chauffeured Bentley.



## TULIPS IN BLOOM

---

In springtime, the city and its surrounding countryside come alive in a riot of colour as the famous Dutch tulips bloom.

Visit a museum to learn more about over 500 species and wander among them in a beautiful garden. Head out into the vibrant fields for a picnic and gather your own bouquet.



## THE DUTCH HERITAGE GASTRONOMY EXPERIENCE

---

Amsterdam and its culinary delights are best explored by bicycle. Join an expert guide to pedal through charming alleys, hear wonderful stories and sample delicious flavours. Watch the creation of a fresh Stroopwafel before devouring it at Albert Cuyp market and try local spirits at a historic distillery.



## DINING BY DESIGN

---

Embark on a bespoke culinary adventure in the exclusive surroundings of an elegant suite overlooking Dam Square and the Royal Palace.

Tailor the menu to your taste and then relax as your private chef, sommelier and butler treat you to a sumptuous private meal with breathtaking views.



## SPICE SPOONS

---

Explore modern Dutch mixology in a tailor-made workshop designed by Alexander Montrose.

Visit Wynand Fockin, Amsterdam's oldest distillery, for a guided tour and tasting of Dutch heritage spirits. Back at Bar The Tailor, make your own unique creations and brand a bottled cocktail.



## ANANTARA SPA

---

Escape to our peaceful spa and fully equipped gym for an indulgent pampering and fitness session.

Enjoy alone time or share the experience with colleagues. Restore and revitalize with body scrubs, wraps, massages and facials crafted with natural ingredients to nourish your mind, body and soul.



# WORLD-CLASS EXPERTISE

Our dedicated team can expertly tailor everything to your needs, with extra attention to detail, assuring an unforgettable experience.



[CONSISTENT AND CUSTOMIZED GUEST EXPERIENCES](#)[TAILORED OFFERS AND SERVICES FOR EVENTS PLANNERS](#)

## CONSISTENT AND CUSTOMIZED GUEST EXPERIENCES

At Anantara Grand Hotel Krasnapolsky Amsterdam, we bring each detail of your dream event to life.

- Select your favourite theme, cuisine and decoration, and leave the rest to your dedicated event planner.
- Enjoy one to one personalized treatment and consistent service onsite, thanks to our dedicated event managers who will help with your events needs.
- Contact our project-oriented teams in the hotel to help you find solutions for your event set-up, presentations, transportation, group excursions, etc.

From fabulous entertainment to exquisite banqueting, or singular experiences and treats, our dedicated team will assist you in creating the most stunning experiences.

CONSISTENT AND CUSTOMIZED GUEST EXPERIENCES

TAILORED OFFERS AND SERVICES FOR EVENTS PLANNERS

## TAILORED OFFERS AND SERVICES FOR EVENT PLANNERS

As experienced professionals in meetings and events, we understand the complexity of event planning and have the expertise to help ensure that your event is perfect. From initial concept to on-site execution, our team of event experts work closely with you every step of the way to ensure that your event exceeds expectations.

- Every event is different, which is why we offer tailor made agreements and flexible cancellation.
- Depending on your requirements we offer different proposals, may it be a social event, an incentive trip or product presentation.
- We can provide you with digital solutions to ease your event planning for bigger groups through our customized group websites that make it easy for your customers to book their rooms online.

[Request a proposal for your next event >](#)



# A COMMITMENT WITH SUSTAINABILITY

At Anantara, sustainable hospitality drives our choices. The way we conserve ecological resources, the positive impacts we can have on our communities and the way we ensure sustainable growth, are woven into all of the property's operations.





## PROGRAMME PILLARS

Anantara Hotels, Resorts & Spas is constantly reinforcing its commitment towards environmental, social and cultural conservation. To accomplish this, Anantara has established in-depth policies, procedures and initiatives with respect to:

### PEOPLE

Encourage sustainable work ethics and human capital development.

### GOVERNANCE

Strengthen good corporate governance and responsible business culture.

### VALUE CHAIN

Drive sustainable value chain management practice.

### SHARED VALUE

Integrate and advocate shared value practices in Anantara operations.

### PLANET

Manage environmental impact and advocate conservation.



# GLOBAL PROJECTS

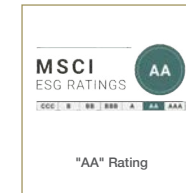
## VALUE CHAIN

- 20% reduction in energy intensity for Minor Hotels by 2023 (Baseline 2016)
- 20% reduction in carbon dioxide emission intensity for Minor Hotels by 2023 (Baseline 2016)
- 20% reduction in water intensity for Minor Hotels by 2023 (Baseline 2016)
- Minor International maintains annual “Excellent” CG scoring for the ninth consecutive year
- Signed UNESCO Sustainable Travel Pledge
- Received MSCI ESG Rating of AA
- Member of Dow Jones Sustainability Indices
- Highly Commended Sustainability Award 2021 (Market Capitalization of over Baht 100 Billion) - The Stock Exchange of Thailand

## ON TRACK

- 75% reduction of single-use plastic by 2024 (Baseline 2016)
- 100% of nature-based hotels have at least one long-term conservation initiative by 2023

## CERTIFICATION



Endorsed by:





## LOCAL PROJECTS

### ECO-SUSTAINABLE ACTIONS

- Eco-friendly bamboo key cards
- Collaboration with Earth Water to completely eliminating plastic water bottles
- Refillable dispensers for the bathroom amenities
- Own electric car charging stations to encourage the use of low-emission vehicles
- Use of environment friendly cleaning products
- Waste management by boat via the canals instead of using dedicated trucks

### SOCIAL RESPONSIBILITY ACTIVITIES

- Exclusive breakfast for elders living in Amsterdam hosted regularly at Wintergarden
- Monthly collaborations with Stichting Tutu to host terminal patients and make their 'Last Wish' come true with an unforgettable stay
- Welcome amenities exclusively produced for the hotel as a result of a social project where unsheltered people from Amsterdam get the opportunity to work
- All fresh flowers adorning the hotel are sourced from local growers, who nurture their blossoms without using chemicals
- Food suppliers are chosen based on their commitment to sustainability and responsible farming and transportation processes
- Proud to partner with local suppliers in the neighbourhood, like Wynand Fockink, one of Amsterdam's oldest distilleries



ANANTARA

---

GRAND HOTEL  
KRASNAPOLSKY  
AMSTERDAM

**Anantara Grand Hotel Krasnapolsky Amsterdam**

Dam 9, 1012 JS Amsterdam, Netherlands

T (+31) 20 554 9111 | E [groups.krasnapolsky@anantara-hotels.com](mailto:groups.krasnapolsky@anantara-hotels.com)

[anantara.com](http://anantara.com)