



+49 (0) 221 13071 0
info.cologne@hilton.com



OUR ROOMS

HILTON GUEST ROOM

Choose between a Queen, King or Twin bed according to your wishes. Special touches include a small fridge, as well as coffee - and tea - making facilities. The room size varies from 20 to 25 m². Enjoy stunning views on the cathedral in one of our standard categories.

DELUXE ROOM

With the decision for a 35 m² Deluxe Room you treat yourself with additional space. Choose from a regular Deluxe Room, a Deluxe Room with Cathedral View or a Deluxe Corner Room.

JUNIOR SUITE

A separate seating area with a sofa and extra space are offered in our Junior Suites. Indulge yourself in these 45 m² Suites with extra ordinary architecture. For additional comfort and your perfect morning, our Junior Suites are equipped with a Nespresso coffee machine.

DUPLEX SUITE

Spread over spacious two floors with 100 m², our Duplex Suites provide lots of space. In addition to the Junior Suites amenities, a large bathroom with whirlpool, bath tub and a spacious living area leave room for your personal desires.

MEETINGS AND EVENTS

JUPITER BALLROOM

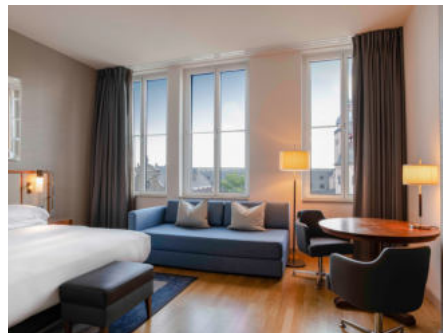
Flooded with natural daylight and equipped with blackout curtains, this 400-capacity space with a total of 446 m² can be divided into three separate rooms by flexible partitions. It is surrounded by eight multi functional banqueting rooms. Large windows make it possible to deliver goods such as a car up to the size of 2.4 m x 2.4 m. Have your next model release or exhibition at Hilton Cologne.

OVAL OFFICE

A nearly 360° degree panoramic view gives your meeting the extra kick. Located on the first floor, participants can oversee the hotel and the surrounding area. The Oval Office provides 70 m², furnished with high quality parquet floor.

BOARDROOM PLUTO

Providing room for up to eight participants on 24 m². Pluto is often used for important business meetings which require a discrete atmosphere.



AT A GLANCE

- Close to Cologne Cathedral
- Pigeon Post Bar & Eatery
- Grand Ballroom for up to 400 people
- All rooms and 9 meeting rooms with fresh air
- 24/7 fitness with gym sauna and steam room
- High speed wireless internet
- Secure parking and car rental service
- Direct (high speed) train connections to airports Cologne-Bonn, Düsseldorf and Frankfurt International

EXPLORING COLOGNE

- Cologne Cathedral (0.2 km)
- Old Town and Rhine Promenade (0.2 km)
- LANXESS Arena (2 km)
- Koelnmesse (2.5 km)

EAT AND DRINK

PIGEON POST BAR & EATERY

Experience the new Pigeon Post Bar & Eatery. A place to return home and set off, a place to connect people from all over the world. A culinary and social hub - ideal to mingle, relax or work. A combination of local ingredients and products mixed with Mediterranean specialities and international influences. Connecting the local and familiar with the international and unknown. Innovative drinks to surprise our guests with new flavour combinations and playful details.

KONRAD RESTAURANT

Start your day right with a scrumptious breakfast at Konrad Restaurant. From healthy options to guilty pleasures - our choices offer something for everyone.



OUR FACILITIES

FIT & WELL

Personalised fitness featuring modern cardio and strength training equipment helps you feel your best during your stay. Personal trainers are available upon request to help. Recharge in the sauna or steam room. Relaxation chairs and a rest area invite to take a break after your workout or between two sauna sessions.

GENERAL INFORMATION

Ballroom Jupiter is flooded with natural light and can be divided into three areas. Surrounded by eight other multi-functional event spaces, you'll find ideal breakout opportunities. With an entire window front, the Oval Office is a highlight even on dark winter days. Together with our event team we plan and realize an extraordinary event for you and your guests.



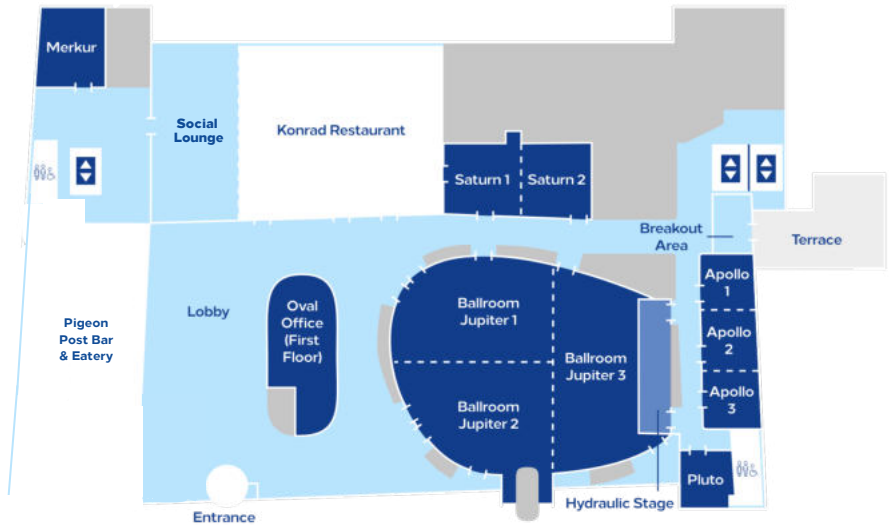
Conference and Events Rooms Capacity Chart

Name	Floor	Area (m²)	Area (sq.ft.)	Height (m)	Reception	Boardroom	U-Shape	Theatre	Classroom	Banquet	Natural Daylight	Power Supply
Salon Merkur	Ground Floor	38	409	2.7	20	14	15	20	12	10	*	*
Saturn 1 + 2	Ground Floor	90	969	2.7	60	30	25	60	36	20	-	-
Salon Saturn 1	Ground Floor	44	474	2.7	35	14	15	30	15	10	-	-
Salon Saturn 2	Ground Floor	46	495	2.7	35	14	15	30	15	10	-	-
Apollo 1 + 2 + 3	Ground Floor	72	775	2.7	60	30	25	40	30	30	*	-
Salon Apollo 1	Ground Floor	22	237	2.7	20	10	8	15	-	-	*	-
Salon Apollo 2	Ground Floor	25	269	2.7	20	10	8	15	-	-	*	-
Salon Apollo 3	Ground Floor	25	269	2.7	20	10	8	15	-	-	-	-
Salon Pluto	Ground Floor	24	258	2.7	-	8	-	-	-	-	*	*
Ballroom Jupiter 1 + 2 + 3	Ground Floor	446	4801	4	400	-	80	400	250	220	*	-
Ballroom Jupiter 1 + 2	Ground Floor	250	2691	4	200	-	49	190	105	100	*	-
Ballroom Jupiter 1	Ground Floor	137	1475	4	80	32	30	90	60	50	*	-
Ballroom Jupiter 2	Ground Floor	113	1216	4	80	30	30	60	45	40	*	-
Ballroom Jupiter 3	Ground Floor	196	2110	4	180	40	40	168	90	70	*	*
Oval Office	First	70	753	2.5	30	22	25	30	19	-	*	-

Ground Floor

FLOOR MAP KEY

- Meeting/Conference Rooms
- Foyer/Public Space
- Private
- Stage
- Outdoor Space



HILTON COLOGNE

Find us in the heart of the city centre, just a 2 minutes walk from the train station and cathedral
info.cologne@hilton.com
Marzellenstraße 13-17
50667 Cologne
T: +49 (0) 22113 0710 | F: +49 (0) 22113 0720
E: info.cologne@hilton.com