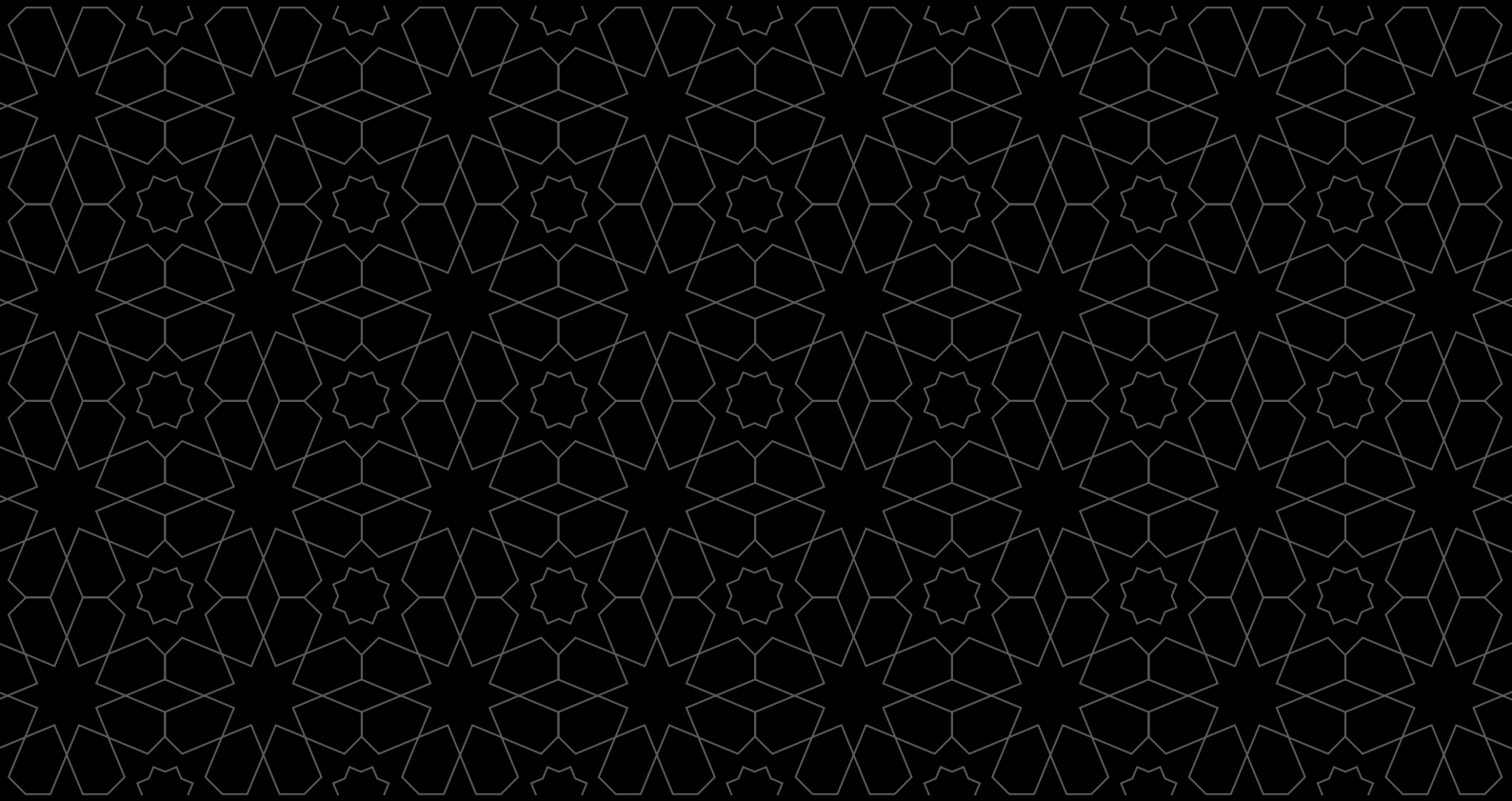




Çırağan Palace  
Kempinski

İSTANBUL

A world of splendour where luxury  
and history blend together in perfect harmony



*Kempinski*

HOTELIERS SINCE 1897

## Facilities & services

Çırağan Palace Kempinski Istanbul, the only Ottoman Imperial Palace & Hotel on the Bosphorus, is a landmark that reflects the legendary opulence of the Ottoman Empire.



### *The Crown Jewel of Istanbul*

#### **NUMBER OF ROOMS AND SUITES**

- ♦ 11 Palace suites
- ♦ 20 hotel suites
- ♦ 282 hotel rooms including
- ♦ 190 non-smoking rooms

#### **WELLNESS AND ACTIVITIES**

- ♦ Indoor and outdoor pools
- ♦ Full service Spa
- ♦ Authentic Turkish Hamam
- ♦ Sauna and Jacuzzi
- ♦ The Fitness Centre

#### **PLACES OF INTEREST**

- ♦ Dolmabahçe Palace, Ortaköy neighborhood and Yıldız Palace gardens suitable for walking.
- \* All within walking distance

#### **GENERAL INFORMATION**

- ♦ Currency – Turkish Lira
- ♦ Climate – Eastern European
- ♦ VAT – 18%

#### **GUEST ROOM FACILITIES**

- ♦ Individually controlled air-conditioning
- ♦ Direct dial telephones
- ♦ In-room dual telephone line
- ♦ LCD screen TV
- ♦ Mini bar
- ♦ In-room safe
- ♦ High speed Wi-Fi Internet access
- ♦ Premium bathroom amenities
- ♦ Computer and fax hook ups
- ♦ Umbrella
- ♦ Wake-up call
- ♦ Choice of 6 pillows and an additional pillow menu
- ♦ In-room dining

#### **RESTAURANTS AND BARS**

- ♦ Laledan Restaurant: Daily buffet breakfast, brunch on Sundays, all-day dining menu
- ♦ Gazebo Lounge: A la carte breakfast, afternoon tea, all-day pastry, tea, coffee
- ♦ Tuğra Restaurant & Lounge: Ultimate Ottoman dining experience
- ♦ Bosphorus Grill: Grilled delicacies from Turkish and world cuisines (summer only)
- ♦ Çırağan Bar: Signature cocktails
- ♦ Le Fumoir: Stylish bar and lounge open throughout the year

#### **HOTEL SERVICES**

- ♦ Concierge services
- ♦ Airport transfers via boat, helicopter or limousine
- ♦ Indoor parking
- ♦ Hairdresser
- ♦ Shopping arcade
- ♦ Florist
- ♦ Laundry and dry cleaning

## Form & functions

At Çırağan Palace Kempinski Istanbul we offer our guests sophisticated services and state-of-the-art technical facilities to create the perfect combination for unforgettable events and meetings.



### BUSINESS SERVICES

- Business Centre available 24-hours with Internet access
- Extensive conference, meeting and banquet facilities from 10 to 2000 guests

### CONFERENCE / BANQUET FACILITIES

- Ballroom for up to 850 guests in banquet style
- Palace Terrace for up to 1200 guests in banquet style
- 15 meeting rooms in the Palace
- 5 meeting rooms including a permanent boardroom in the hotel section
- All meeting rooms with day light
- Technology Butler services by Çırağan Express
- State-of-the-art audio- visual equipment
- Wi-Fi Internet connection

### SPECIAL FEATURES

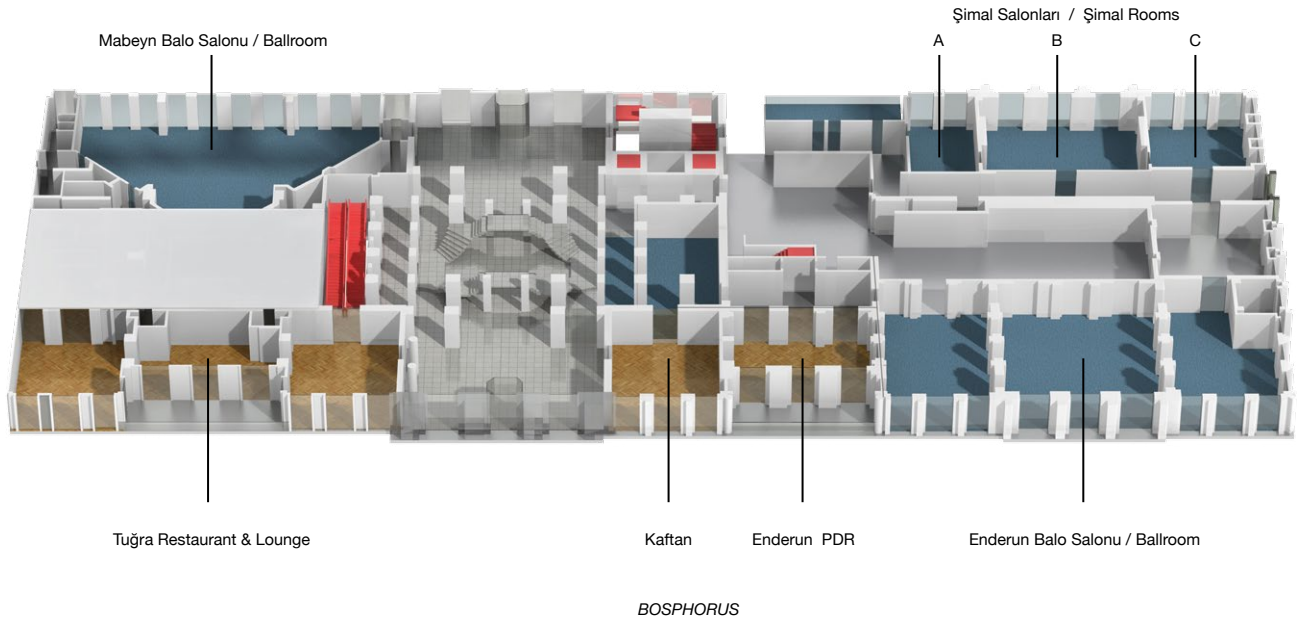
- Ottoman Imperial Palace on the premises
- Historical Turkish Hamam in the Palace
- Exclusive Palace Suites with a separate entrance and 24-hour butler service
- Well ventilated bar open throughout the year
- Temperature-controlled outdoor infinity pool

### PALACE HISTORY

- The first water side villa was constructed in 1719 by Grand Vizier Ibrahim Pasha for his wife Fatma Sultan.
- As she organized torch-lit celebrations in the gardens, Çırağan, meaning a special light source in Persian, became synonymous with the Palace.
- In 1834 Sultan Mahmut II decided to rebuild the Palace.
- In 1857 Sultan Abdülmecid demolished it to build a Western style palace.
- After his death, it was completed by Sultan Abdülaziz in 1871 but in an Eastern style.
- In 1909 it was selected as the Parliament Building yet sadly destroyed by a fire in 1910.
- Years later Kempinski lovingly restored it to its former glory and opened its doors in 1991.

# Capacity charts

## PALACE 1<sup>ST</sup> FLOOR



## Palace & Outdoor Venues

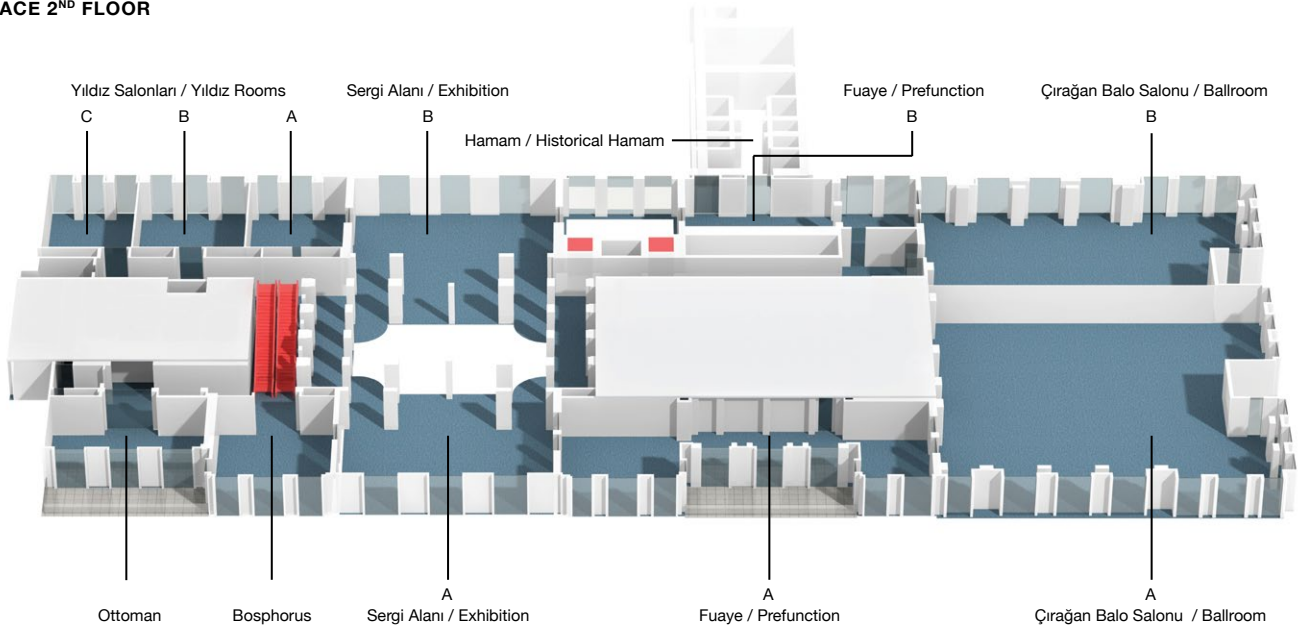
OUTDOOR VENUE	WIDTH X LENGHT (m)	HEIGHT (m)	AREA (m²)	AREA (ft²)	CAPACITY (PEOPLE)								
					CLASS	THEATRE	BOARD	HOLLOW SQUARE	'U' SHAPE	DINNER SEATED	SEATED BUFFET	COCKTAIL PROLONGE	COCKTAIL
Palace Terrace	77.33X21.90	-	1693	1822	-	-	-	-	-	1200	1200	2500	2500
East Garden	9.30X32.88	-	305	3283	-	-	-	-	-	150	150	280	400
Bosphorus Pier Lounge	13.86X35.58	-	422	4542	-	-	-	-	-	240	200	280	400
Palace 1&2 Floor	-	-	4604	-	-	-	-	-	-	3000	3000	-	-

## Palace 1<sup>ST</sup> Floor

MEETING ROOMS	WIDTH X LENGHT (m)	HEIGHT (m)	AREA (m²)	AREA (ft²)	CAPACITY (PEOPLE)								
					CLASS	THEATRE	BOARD	HOLLOW SQUARE	'U' SHAPE	DINNER SEATED	SEATED BUFFET	COCKTAIL PROLONGE	COCKTAIL
Şimal A	5.63X10.76	3	60	635	24	35	24	32	28	30	25	30	40
Şimal B	13.47X10.48	3	141	1410	60	130	40	46	40	80	65	70	120
Şimal C	8.03X10.07	3	80	872	34	60	30	36	30	50	30	40	60
Mabeyn	24.82X16.73 9.30X3.73	3.75	375	4036	160	300	60	70	50	220	220	300	350
Kaftan	8.47X10.81	4.45	91	979	36	80	30	36	34	60	40	60	80
Enderun PDR	6.85X10.58	4.45	72	797	25	50	30	30	24	50	40	60	80
Enderun	14.49X29.37	4.45	425	4575	70	150	40	60	50	250	210	300	350

# Capacity charts

## PALACE 2<sup>ND</sup> FLOOR



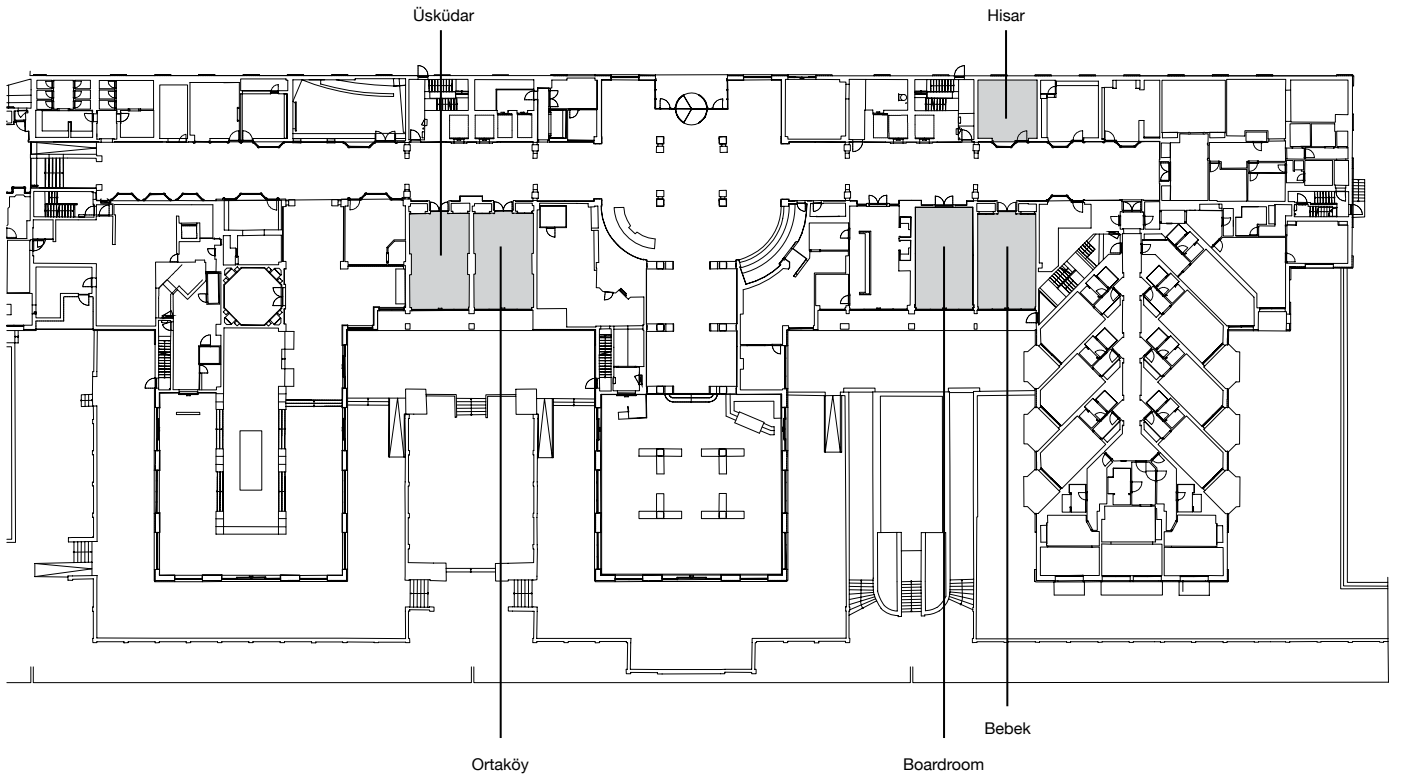
### BOSPHORUS

## Palace 2<sup>nd</sup> Floor

MEETING ROOMS	WIDTH X LENGHT (m)	HEIGHT (m)	AREA (m <sup>2</sup> )	AREA (ft <sup>2</sup> )	CAPACITY (PEOPLE)								
					CLASS	THEATRE	BOARD	HOLLOW SQUARE	'U' SHAPE	DINNER SEATED	SEATED BUFFET	COCKTAIL PROLONGE	COCKTAIL
Ballroom A	24.89X24.90	7	619	6662	300	600	-	-	-	500	500	700	700
Ballroom B	13.49X25.24	7	340	3089	160	250	-	-	-	250	250	350	350
Ballroom A+B	23.94X38.30	7	959	10290	600	1100	-	-	-	850	850	1200	1200
Bosphorus	8.44X10.81	4.85	91	936	30	60	35	36	34	60	40	40	80
Ottoman	6.70X11.10	4.50	74	818	30	40	30	32	30	50	40	40	80
Yıldız A	9.42X7.20	3.25	67	710	30	60	20	26	21	40	20	30	50
Yıldız B	9.42X8.12	3.25	76	818	30	70	30	34	26	50	30	40	70
Yıldız C	9.42X7.06	3.25	66	710	30	60	20	26	21	40	20	30	50
Yıldız A+B+C	9.42X22.38	3.25	210	2250	120	180	60	70	62	150	120	200	250
Prefunction A	24.59X10.15	7	256	2756	-	-	-	-	-	-	-	180	250
Prefunction B	17.47X7	3.5	122	1313	-	-	-	-	-	-	-	60	100
Exhibition A	10.76X15.47	7	156	16793	-	-	-	-	-	-	-	250	400
Exhibition B	11.06X15.30	7	160	1722	-	-	-	-	-	-	-	250	400
Hamam	7.20X22.85	7	164	1766	-	-	-	-	-	-	-	40	100

# Capacity charts

## HOTEL

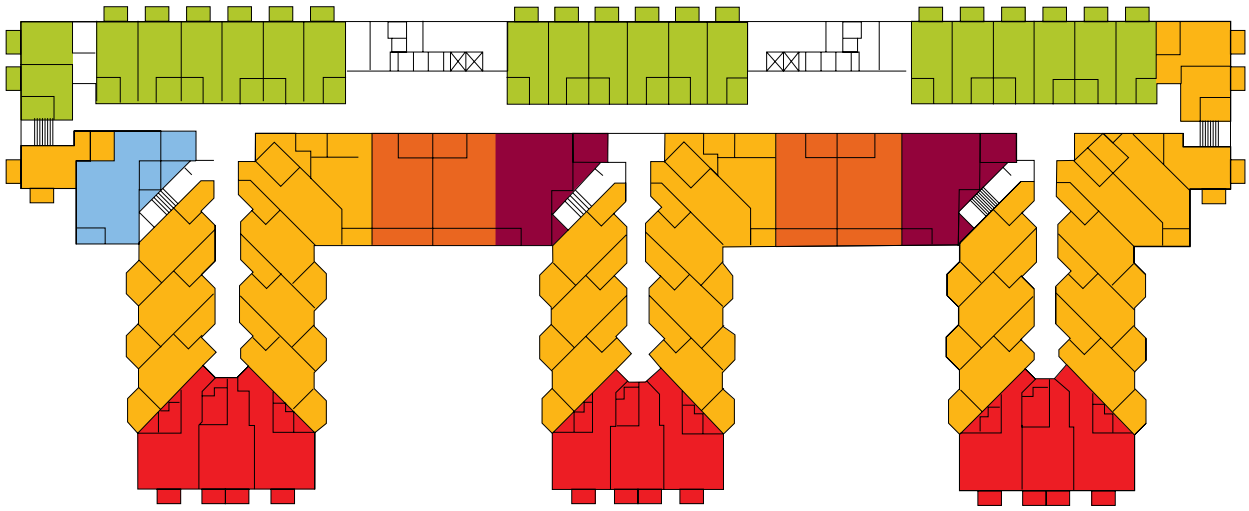


## BOSPHORUS

## Hotel

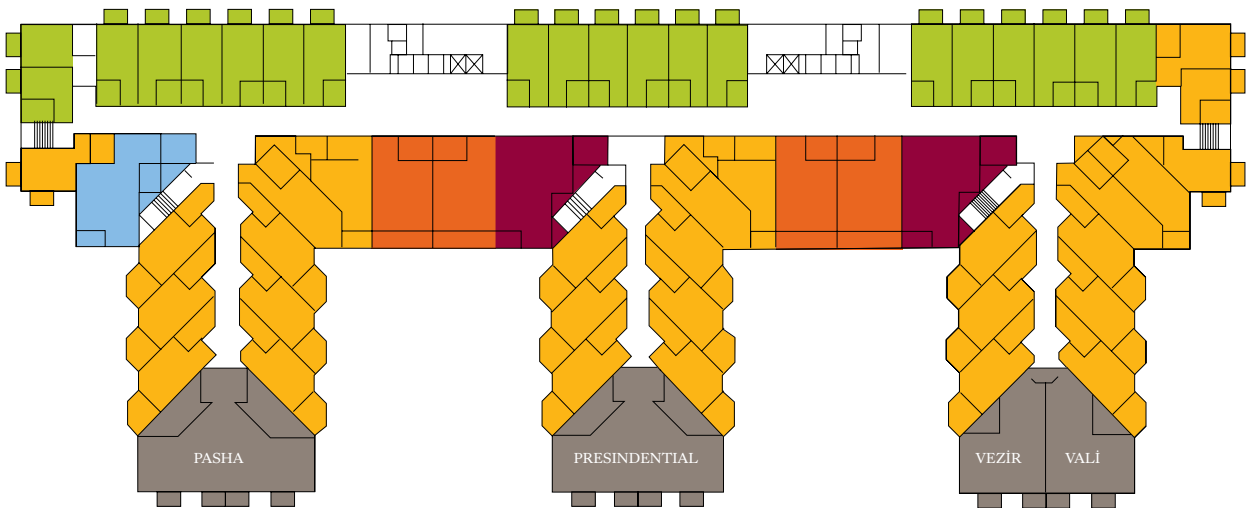
MEETING ROOMS	WIDTH X LENGHT (m)	HEIGHT (m)	AREA (m <sup>2</sup> )	AREA (ft <sup>2</sup> )	CAPACITY (PEOPLE)								
					CLASS	THEATRE	BOARD	HOLLOW SQUARE	'U' SHAPE	DINNER SEATED	SEATED BUFFET	COCKTAIL PROLONGE	COCKTAIL
Üsküdar	5.69X9.96	2.70	56	538	24	40	20	24	20	-	-	-	30
Ortaköy	5.69X9.96	2.70	56	538	24	40	20	24	20	-	-	-	30
Bebek	5.69X9.96	2.70	56	538	24	40	20	24	20	-	-	-	30
Boardroom	5.75X9.96	2.70	56	538	-	-	16	-	-	-	-	-	-
Hisar	5.67X5.60	2.65	31.8	538	-	15	14	-	14	-	-	-	-

## Hotel floor plan



BOSPHORUS

## Hotel 5<sup>th</sup> floor plan



BOSPHORUS

✿ PARK VIEW ROOM 103 rooms

✿ SUPERIOR BOSPHORUS VIEW ROOM 125 rooms

✿ DELUXE BOSPHORUS VIEW ROOM 20 rooms

✿ GRAND DELUXE BOSPHORUS VIEW ROOM 34 rooms

✿ ONE BEDROOM SUITE 10 rooms

✿ STUDIO SUITE 5 rooms

Çırağan Palace  
Kempinski Istanbul  
Çırağan Caddesi No.32  
Beşiktaş 34349  
İstanbul Turkey

T +90 212 326 46 46  
F +90 212 259 66 87  
reservationoffice.ciraganpalace@kempinski.com  
meetings.istanbul@kempinski.com  
kempinski.com/istanbul

**KEMPINSKI.COM**



**PROPERTY CODES:**  
APPOLLO/GALILEO: 76580  
SABRE: 166895  
AMADEUS: ACCCKEM  
WORLDSPAN: ACC1  
PEGASUS: HYKACCK1